



Datasheet for ABIN969279

## anti-MBP antibody



[Go to Product page](#)

7 Images

2 Publications

### Overview

Quantity:	100 µL
Target:	MBP
Reactivity:	Human
Host:	Mouse
Clonality:	Monoclonal
Application:	Western Blotting (WB), Immunohistochemistry (IHC), ELISA, Immunocytochemistry (ICC), Flow Cytometry (FACS)

### Product Details

Immunogen:	Purified recombinant fragment of human MBP expressed in E. coli.
Clone:	2H9
Isotype:	IgG1
Purification:	purified

### Target Details

Target:	MBP
Alternative Name:	Myelin basic protein ( <a href="#">MBP Products</a> )
Background:	Description: The protein encoded by the classic MBP gene is a major constituent of the myelin sheath of oligodendrocytes and Schwann cells in the nervous system. However, MBP-related transcripts are also present in the bone marrow and the immune system. These mRNAs arise from the long MBP gene (otherwise called "Golli-MBP") that contains 3 additional exons located

## Target Details

---

upstream of the classic MBP exons. Alternative splicing from the Golli and the MBP transcription start sites gives rise to 2 sets of MBP-related transcripts and gene products. The Golli mRNAs contain 3 exons unique to Golli-MBP, spliced in-frame to 1 or more MBP exons. They encode hybrid proteins that have N-terminal Golli aa sequence linked to MBP aa sequence. The second family of transcripts contain only MBP exons and produce the well characterized myelin basic proteins. This complex gene structure is conserved among species suggesting that the MBP transcription unit is an integral part of the Golli transcription unit and that this arrangement is important for the function and/or regulation of these genes.

Aliases: MGC99675

---

Molecular Weight: 33 kDa

---

Gene ID: 4155

---

HGNC: 4155

## Application Details

---

Application Notes: ELISA: 1:10000, WB: 1:500 - 1:2000, IHC: 1:200 - 1:1000, ICC: 1:200 - 1:1000, FCM: 1:200 - 1:400

---

Restrictions: For Research Use only

## Handling

---

Format: Liquid

---

Buffer: Ascitic fluid containing 0.03 % sodium azide.

---

Preservative: Sodium azide

---

Precaution of Use: This product contains Sodium azide: a POISONOUS AND HAZARDOUS SUBSTANCE which should be handled by trained staff only.

---

Storage: 4 °C/-20 °C

---

Storage Comment: 4°C, -20°C for long term storage

## Publications

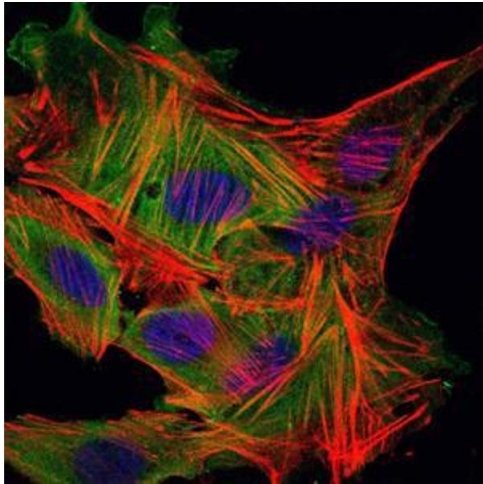
---

Product cited in: Toka, Dunaway, Smaltz, Szulc-Dąbrowska, Drnevich, Mielcarska, Bossowska-Nowicka, Schweizer: "Bacterial and viral pathogen-associated molecular patterns induce divergent early transcriptomic landscapes in a bovine macrophage cell line." in: **BMC genomics**, Vol. 20, Issue 1, pp. 15, (2019) ([PubMed](#)).

Murakami, Maeda, Yonezawa, Matsuki: "CC chemokine ligand 2 and CXC chemokine ligand 8 as neutrophil chemoattractant factors in canine idiopathic polyarthritis." in: **Veterinary immunology and immunopathology**, Vol. 182, pp. 52-58, (2016) ([PubMed](#)).

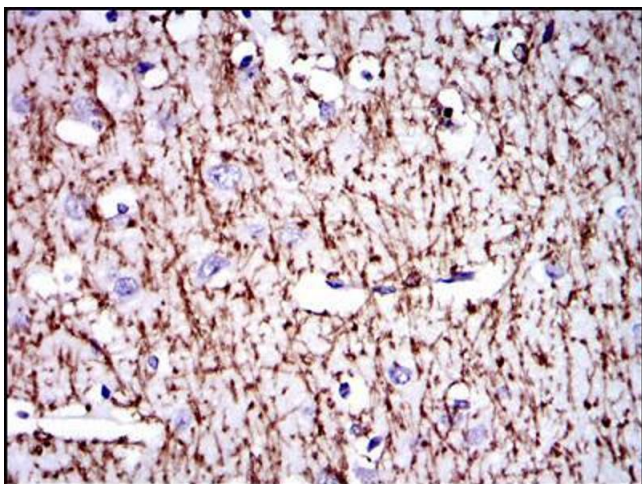
Images

---



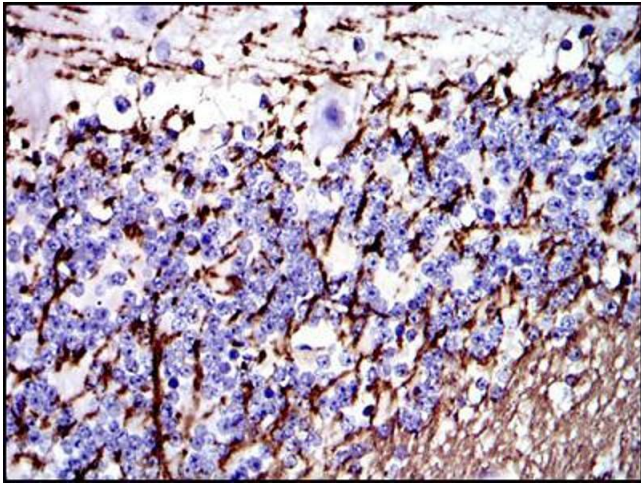
#### Immunofluorescence

**Image 1.** Immunofluorescence analysis of MSCS cells using MBP mouse mAb (green). Blue: DRAQ5 fluorescent DNA dye. Red: Actin filaments have been labeled with Alexa Fluor-555 phalloidin.



#### Immunohistochemistry

**Image 2.** Immunohistochemical analysis of paraffin-embedded brain tissues using MBP mouse mAb with DAB staining.



### Immunohistochemistry

**Image 3.** Immunohistochemical analysis of paraffin-embedded cerebellum tissues using MBP mouse mAb with DAB staining.

Please check the [product details page](#) for more images. Overall 7 images are available for ABIN969279.