

Datasheet for ABIN969280

anti-MCM2 antibody

6 Images

2 Publications

[Go to Product page](#)

Overview

Quantity:	100 µL
Target:	MCM2
Reactivity:	Human, Mouse, Rat, Monkey
Host:	Mouse
Clonality:	Monoclonal
Application:	Western Blotting (WB), Immunohistochemistry (IHC), ELISA, Flow Cytometry (FACS)

Product Details

Immunogen:	Purified recombinant fragment of human MCM2 expressed in E. coli.
Clone:	2B3
Isotype:	IgG1
Purification:	purified

Target Details

Target:	MCM2
Alternative Name:	MCM2 (MCM2 Products)
Background:	<p>Description: The protein encoded by this gene is one of the highly conserved mini-chromosome maintenance proteins (MCM) that are involved in the initiation of eukaryotic genome replication. The hexameric protein complex formed by MCM proteins is a key component of the pre-replication complex (pre-RC) and may be involved in the formation of replication forks and in the recruitment of other DNA replication related proteins. This protein forms a complex with</p>

Target Details

	MCM4, 6, and 7, and has been shown to regulate the helicase activity of the complex. This protein is phosphorylated, and thus regulated by, protein kinases CDC2 and CDC7. Aliases: BM28, CCNL1, CDCL1, cdc19, D3S3194, MITOTIN, KIAA0030, MGC10606
Molecular Weight:	125 kDa
Gene ID:	4171
HGNC:	4171
Pathways:	DNA Damage Repair , Mitotic G1-G1/S Phases , DNA Replication , Chromatin Binding , Synthesis of DNA

Application Details

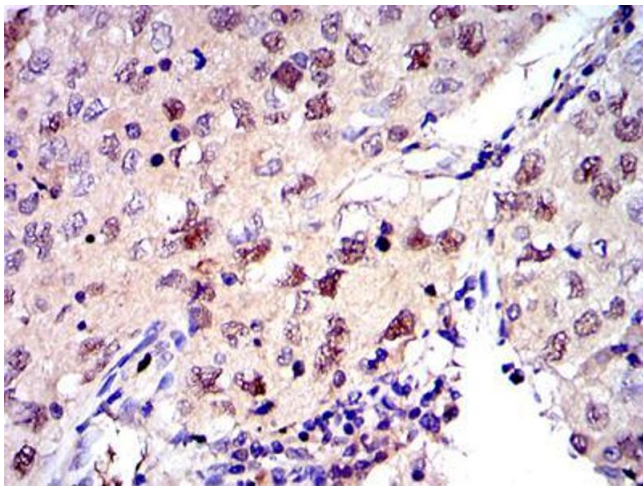
Application Notes:	ELISA: 1:10000, WB: 1:500 - 1:2000, IHC: 1:200 - 1:1000, FCM: 1:200 - 1:400
Restrictions:	For Research Use only

Handling

Format:	Liquid
Buffer:	Ascitic fluid containing 0.03 % sodium azide.
Preservative:	Sodium azide
Precaution of Use:	This product contains Sodium azide: a POISONOUS AND HAZARDOUS SUBSTANCE which should be handled by trained staff only.
Storage:	4 °C/-20 °C
Storage Comment:	4°C, -20°C for long term storage

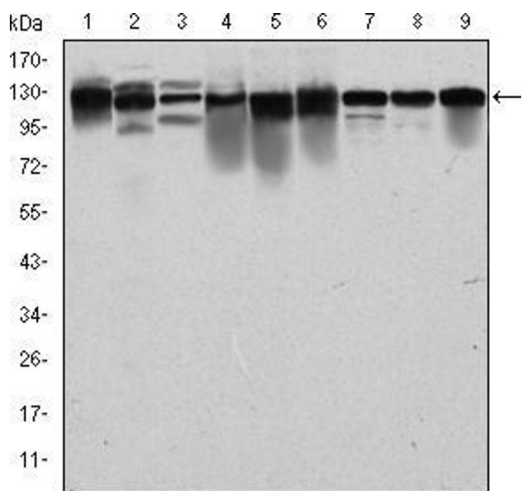
Publications

Product cited in:	Trilck, Peter, Zheng, Frank, Dobrenis, Mascher, Rolfs, Frech: "Diversity of glycosphingolipid GM2 and cholesterol accumulation in NPC1 patient-specific iPSC-derived neurons." in: Brain research , Vol. 1657, pp. 52-61, (2016) (PubMed).
-------------------	---



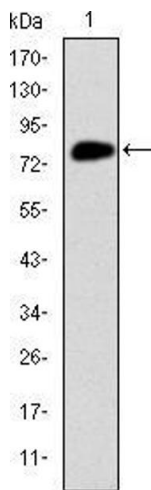
Immunohistochemistry

Image 1. Immunohistochemical analysis of paraffin-embedded lung cancer tissues using MCM2 mouse mAb with DAB staining.



Western Blotting

Image 2. Western blot analysis using MCM2 mouse mAb against PC-12 (1), Cos7 (2), NIH/3T3 (3), HepG2 (4), HEK293 (5), K562 (6), Jurkat (7), Hela (8) and MCF-7 (9) cell lysate.



Western Blotting

Image 3. Western blot analysis using MCM2 mAb against human MCM2 (AA: 16-232) recombinant protein.(Expected MW is 50.4 kDa)

Please check the [product details page](#) for more images. Overall 6 images are available for ABIN969280.