

Datasheet for ABIN969292

anti-MSH6 antibody**3** Images**1** Publication[Go to Product page](#)

Overview

Quantity:	100 µL
Target:	MSH6
Reactivity:	Human
Host:	Mouse
Clonality:	Monoclonal
Conjugate:	This MSH6 antibody is un-conjugated
Application:	Western Blotting (WB), ELISA

Product Details

Purpose:	MSH6 Antibody
Immunogen:	Purified recombinant fragment of human MSH6 expressed in E. Coli.
Clone:	5B11
Isotype:	IgG1
Purification:	Ascitic fluid

Target Details

Target:	MSH6
Alternative Name:	MSH6 (MSH6 Products)
Background:	Description: This gene encodes a protein similar to the MutS protein. In E. coli, the MutS protein helps in the recognition of mismatched nucleotides, prior to their repair. A highly conserved

Target Details

region of approximately 150 aa, called the Walker-A adenine nucleotide binding motif, exists in MutS homologs. The encoded protein of this gene combines with MSH2 to form a mismatch recognition complex that functions as a bidirectional molecular switch that exchanges ADP and ATP as DNA mismatches are bound and dissociated. Mutations in this gene have been identified in individuals with hereditary nonpolyposis colon cancer (HNPCC) and endometrial cancer. ,

Aliases: GTBP, HSAP, HNPCC5

Molecular Weight: 160kDa

Gene ID: 2956

HGNC: 2956

UniProt: [P52701](#)

Pathways: [DNA Damage Repair](#), [Chromatin Binding](#), [Production of Molecular Mediator of Immune Response](#)

Application Details

Application Notes: ELISA: 1/10000

Restrictions: For Research Use only

Handling

Format: Liquid

Buffer: Ascitic fluid containing 0.03 % sodium azide.

Preservative: Sodium azide

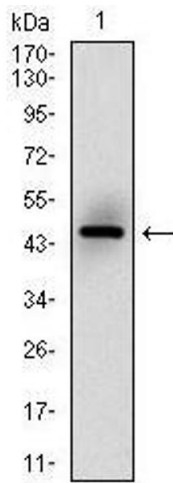
Precaution of Use: This product contains Sodium azide: a POISONOUS AND HAZARDOUS SUBSTANCE which should be handled by trained staff only.

Storage: 4 °C, -20 °C

Storage Comment: Store at 4°C short term. Aliquot and store at -20°C long term. Avoid freeze/thaw cycles.

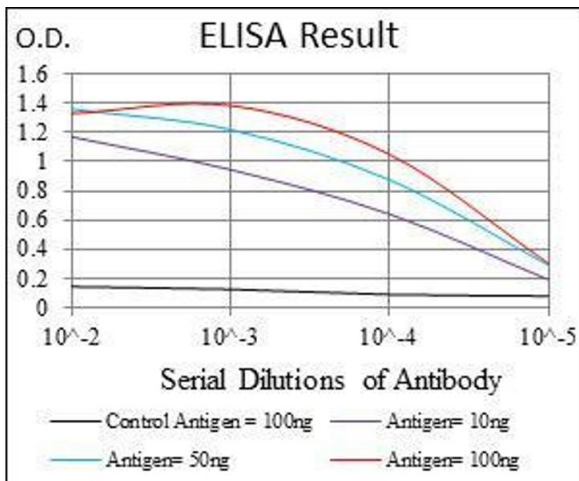
Publications

Product cited in: Becker, Creagh, O'Neill: "Rab39a binds caspase-1 and is required for caspase-1-dependent interleukin-1beta secretion." in: **The Journal of biological chemistry**, Vol. 284, Issue 50, pp. 34531-7, (2009) ([PubMed](#)).



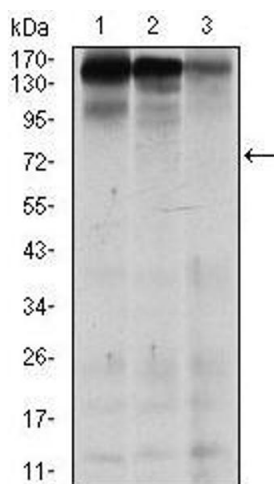
Western Blotting

Image 1. Western blot analysis using MSH6 mAb against human MSH6 (AA: 217-395) recombinant protein. (Expected MW is 45.5 kDa)



ELISA

Image 2. Black line: Control Antigen (100 ng), Purple line: Antigen(10 ng), Blue line: Antigen (50 ng), Red line: Antigen (100 ng),



Western Blotting

Image 3. Western blot analysis using MSH6 mouse mAb against MCF-7 (1), HEK293 (2), and HCT116 (3) cell lysate.