

Datasheet for ABIN969302

anti-MYL2 antibody[Go to Product page](#)**1** Image**2** Publications

Overview

Quantity:	100 µL
Target:	MYL2
Reactivity:	Human
Host:	Mouse
Clonality:	Monoclonal
Application:	Western Blotting (WB), ELISA

Product Details

Immunogen:	Purified recombinant fragment of MYL2 expressed in E. coli.
Clone:	7C9
Isotype:	IgG1
Purification:	purified

Target Details

Target:	MYL2
Alternative Name:	MYL2 (MYL2 Products)
Background:	Description: MYL2(myosin, light chain 2, regulatory, cardiac, slow), also known as MLC-2, MLC2v. Entrez protein NP_000423. MYL2 associated with cardiac myosin beta (or slow) heavy chain. Ca ⁺ triggers the phosphorylation of regulatory light chain that in turn triggers contraction. It is an hexamer of two heavy chains and four light chains that is predominantly expressed in adult cardiac ventricle muscle. Mutations in MYL2 are associated with mid-left

Target Details

ventricular chamber type hypertrophic cardiomyopathy.

Aliases: MLC2, CMH10, DKFZp779C0562

Molecular Weight: 19 kDa

Gene ID: 4633

HGNC: 4633

Pathways: [Myometrial Relaxation and Contraction](#)

Application Details

Application Notes: ELISA: 1:10000, WB: 1:500 - 1:2000

Restrictions: For Research Use only

Handling

Format: Liquid

Buffer: Ascitic fluid containing 0.03 % sodium azide.

Preservative: Sodium azide

Precaution of Use: This product contains Sodium azide: a POISONOUS AND HAZARDOUS SUBSTANCE which should be handled by trained staff only.

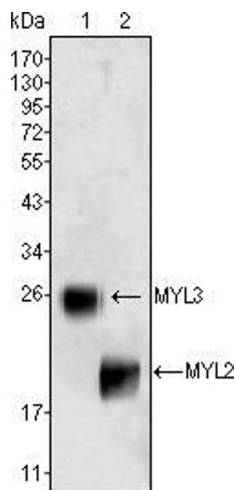
Storage: 4 °C/-20 °C

Storage Comment: 4°C, -20°C for long term storage

Publications

Product cited in: Jan, Adolfsson, Allaman, Buccarello, Magistretti, Pfeifer, Muhs, Lashuel: "Abeta42 neurotoxicity is mediated by ongoing nucleated polymerization process rather than by discrete Abeta42 species." in: **The Journal of biological chemistry**, Vol. 286, Issue 10, pp. 8585-96, (2011) ([PubMed](#)).

Deshmukh, Salehzadeh, Metayer-Coustard, Fahlman, Nair, Al-Khalili: "Post-transcriptional gene silencing of ribosomal protein S6 kinase 1 restores insulin action in leucine-treated skeletal muscle." in: **Cellular and molecular life sciences : CMLS**, Vol. 66, Issue 8, pp. 1457-66, (2009) ([PubMed](#)).



Western Blotting

Image 1. Western blot analysis using MYL3 (1) and MYL2 (2) mouse mAb against rat fetal heart tissue lysate.