



Datasheet for ABIN969354 anti-LIMS1 antibody



[Go to Product page](#)

5 Images

2 Publications

Overview

Quantity:	100 µL
Target:	LIMS1
Reactivity:	Human
Host:	Mouse
Clonality:	Monoclonal
Application:	Western Blotting (WB), ELISA, Flow Cytometry (FACS), Immunocytochemistry (ICC)

Product Details

Immunogen:	Purified recombinant fragment of human PINCH expressed in E. coli.
Clone:	5G7
Isotype:	IgG1
Purification:	purified

Target Details

Target:	LIMS1
Alternative Name:	PINCH (LIMS1 Products)
Background:	Description: The protein encoded by this gene is an adaptor protein which contains five LIM domains, or double zinc fingers. The protein is likely involved in integrin signaling through its LIM domain-mediated interaction with integrin-linked kinase, found in focal adhesion plaques. It is also thought to act as a bridge linking integrin-linked kinase to NCK adaptor protein 2, which is involved in growth factor receptor kinase signaling pathways. Its localization to the periphery

Target Details

of spreading cells also suggests that this protein may play a role in integrin-mediated cell adhesion or spreading. Several transcript variants encoding different isoforms have been found for this gene.

Aliases: PINCH, PINCH1, PINCH-1, LIMS1

Molecular Weight: 37 kDa

Gene ID: 3987

HGNC: 3987

Application Details

Application Notes: ELISA: 1:10000, WB: 1:500 - 1:2000, ICC: 1:200 - 1:1000, FCM: 1:200 - 1:400

Restrictions: For Research Use only

Handling

Format: Liquid

Buffer: Ascitic fluid containing 0.03 % sodium azide.

Preservative: Sodium azide

Precaution of Use: This product contains Sodium azide: a POISONOUS AND HAZARDOUS SUBSTANCE which should be handled by trained staff only.

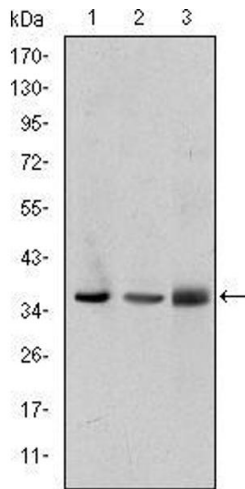
Storage: 4 °C/-20 °C

Storage Comment: 4°C, -20°C for long term storage

Publications

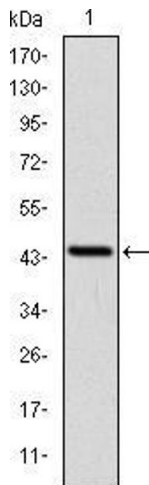
Product cited in: Jan, Adolfsson, Allaman, Buccarello, Magistretti, Pfeifer, Muhs, Lashuel: "Abeta42 neurotoxicity is mediated by ongoing nucleated polymerization process rather than by discrete Abeta42 species." in: **The Journal of biological chemistry**, Vol. 286, Issue 10, pp. 8585-96, (2011) ([PubMed](#)).

Deshmukh, Salehzadeh, Metayer-Coustard, Fahlman, Nair, Al-Khalili: "Post-transcriptional gene silencing of ribosomal protein S6 kinase 1 restores insulin action in leucine-treated skeletal muscle." in: **Cellular and molecular life sciences : CMLS**, Vol. 66, Issue 8, pp. 1457-66, (2009) ([PubMed](#)).



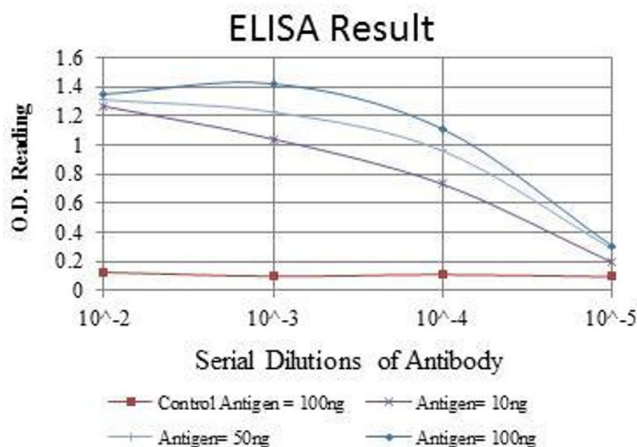
Western Blotting

Image 1. Western blot analysis using PINCH mouse mAb against A549 (1), Jurkat (2), and HeLa (3) cell lysate.



Western Blotting

Image 2. Western blot analysis using PINCH mAb against human PINCH (AA: 87-249) recombinant protein. (Expected MW is 44.2 kDa)



ELISA

Image 3. Red: Control Antigen (100 ng), Purple: Antigen (10 ng), Green: Antigen (50 ng), Blue: Antigen (100 ng),

Please check the [product details page](#) for more images. Overall 5 images are available for ABIN969354.