

Datasheet for ABIN969356

**anti-PODXL antibody**

4 Images

1 Publication

[Go to Product page](#)

## Overview

|              |   |
|--------------|---|
| Quantity:    | 100 µL  |
| Target:      | PODXL   |
| Reactivity:  | Human   |
| Host:        | Mouse   |
| Clonality:   | Monoclonal  |
| Conjugate:   | This PODXL antibody is un-conjugated  |
| Application: | Western Blotting (WB), Immunohistochemistry (IHC), ELISA, Flow Cytometry (FACS) |

## Product Details

|               |  |
|---------------|--|
| Immunogen:    | Purified recombinant fragment of human PODXL expressed in E. coli. |
| Clone:        | 5F5  |
| Isotype:      | IgG1   |
| Purification: | purified   |

## Target Details

|                   |   |
|-------------------|---|
| Target:           | PODXL   |
| Alternative Name: | PODXL ( <a href="#">PODXL Products</a> )  |
| Background:       | <p>Description: This gene encodes a member of the sialomucin protein family. The encoded protein was originally identified as an important component of glomerular podocytes.</p> <p>Podocytes are highly differentiated epithelial cells with interdigitating foot processes covering the outer aspect of the glomerular basement membrane. Other biological activities of the</p> |

## Target Details

encoded protein include: binding in a membrane protein complex with Na<sup>+</sup>/H<sup>+</sup> exchanger regulatory factor to intracellular cytoskeletal elements, playing a role in hematopoietic cell differentiation, and being expressed in vascular endothelium cells and binding to L-selectin. (provided by RefSeq) Tissue specificity: Glomerular epithelium cell (podocyte)  
Aliases: PC, PCLP, Gp200, PCLP-1, MGC138240

Molecular Weight: 49 kDa

Gene ID: 5420

HGNC: 5420

Pathways: [Tube Formation](#)

## Application Details

Application Notes: ELISA: 1:10000, WB: 1:500 - 1:2000, IHC: 1:200 - 1:1000, FCM: 1:200 - 1:400

Restrictions: For Research Use only

## Handling

Format: Liquid

Buffer: Ascitic fluid containing 0.03 % sodium azide.

Preservative: Sodium azide

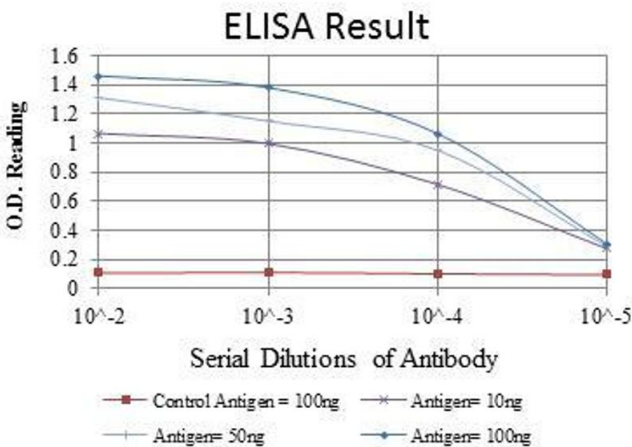
Precaution of Use: This product contains Sodium azide: a POISONOUS AND HAZARDOUS SUBSTANCE which should be handled by trained staff only.

Storage: 4 °C/-20 °C

Storage Comment: 4°C, -20°C for long term storage

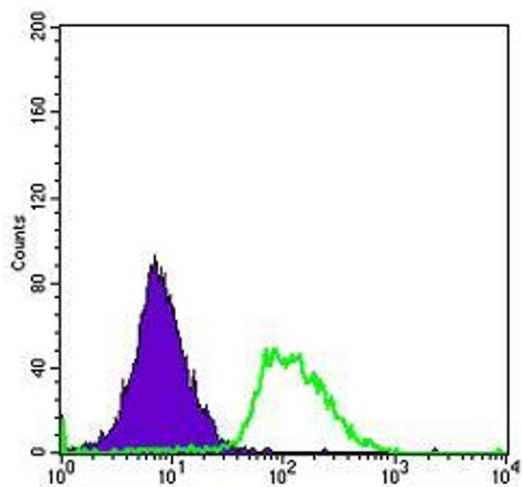
## Publications

Product cited in: Jacques, Pereira, Maia, Cuzzi, Ramos-e-Silva: "Expression of cytokeratins 10, 13, 14 and 19 in oral lichen planus." in: **Journal of oral science**, Vol. 51, Issue 3, pp. 355-65, (2009) ([PubMed](#)).



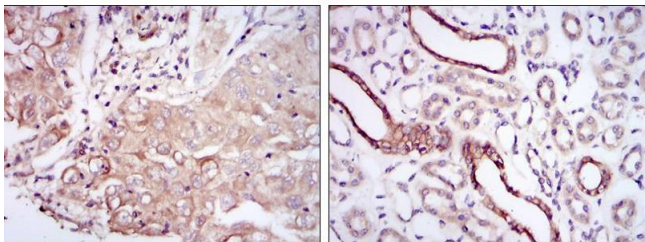
### ELISA

**Image 1.** Red: Control Antigen (100 ng), Purple: Antigen (10 ng), Green: Antigen (50 ng), Blue: Antigen (100 ng),



### Flow Cytometry

**Image 2.** Flow cytometric analysis of HeLa cells using PODXL mouse mAb (green) and negative control (purple).



### Immunohistochemistry

**Image 3.** Immunohistochemical analysis of paraffin-embedded lung cancer tissues (left) and kidney tissues (right) using PODXL mouse mAb with DAB staining.

Please check the [product details page](#) for more images. Overall 4 images are available for ABIN969356.