

Datasheet for ABIN969369

anti-Prostate Specific Antigen antibody (AA 26-251)

4 Images

2 Publications

[Go to Product page](#)

Overview

Quantity:	0.1 mg
Target:	Prostate Specific Antigen (PSA)
Binding Specificity:	AA 26-251
Reactivity:	Human
Host:	Mouse
Clonality:	Monoclonal
Conjugate:	This Prostate Specific Antigen antibody is un-conjugated
Application:	ELISA, Western Blotting (WB), Immunohistochemistry (IHC), Flow Cytometry (FACS)

Product Details

Immunogen:	Purified recombinant fragment of KLK3 (aa26-251) expressed in E. coli.
Clone:	5A11E9
Isotype:	IgG1
Purification:	purified

Target Details

Target:	Prostate Specific Antigen (PSA)
Alternative Name:	PSA (KLK3) (PSA Products)
Background:	Description: Kallikrein-related peptidase 3. Kallikreins are a subgroup of serine proteases having diverse physiological functions. Growing evidence suggests that many kallikreins are implicated

Target Details

in carcinogenesis and some have potential as novel cancer and other disease biomarkers. This gene is one of the fifteen kallikrein subfamily members located in a cluster on chromosome 19. Its protein product is a protease present in seminal plasma. It is thought to function normally in the liquefaction of seminal coagulum, presumably by hydrolysis of the high molecular mass seminal vesicle protein. Serum level of this protein, called PSA in the clinical setting, is useful in the diagnosis and monitoring of prostatic carcinoma. Alternate splicing of this gene generates several transcript variants encoding different isoforms.

Aliases: APS, PSA, hK3, KLK2A1, KLK3

Gene ID: 354

HGNC: 354

Pathways: [Complement System](#)

Application Details

Application Notes: ELISA: 1:10000, WB: 1:500 - 1:2000, IHC: 1:200 - 1:1000, FCM: 1:200 - 1:400

Restrictions: For Research Use only

Handling

Format: Liquid

Buffer: Ascitic fluid containing 0.03 % sodium azide.

Preservative: Sodium azide

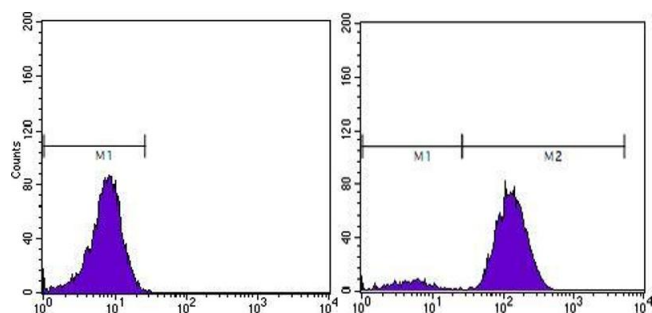
Precaution of Use: This product contains Sodium azide: a POISONOUS AND HAZARDOUS SUBSTANCE which should be handled by trained staff only.

Storage: 4 °C/-20 °C

Storage Comment: 4°C, -20°C for long term storage

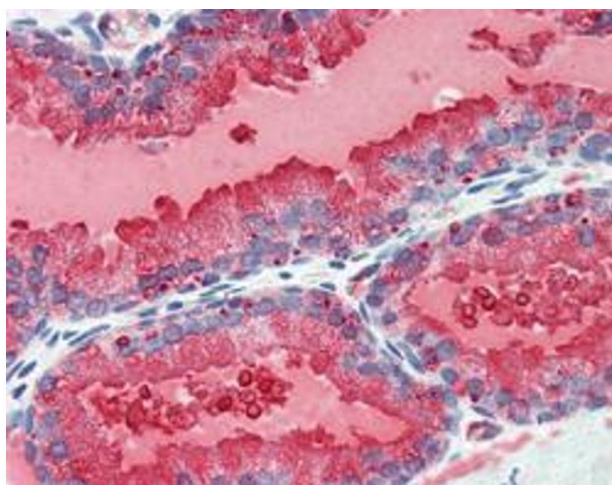
Publications

Product cited in: Jacques, Pereira, Maia, Cuzzi, Ramos-e-Silva: "Expression of cytokeratins 10, 13, 14 and 19 in oral lichen planus." in: **Journal of oral science**, Vol. 51, Issue 3, pp. 355-65, (2009) ([PubMed](#)).



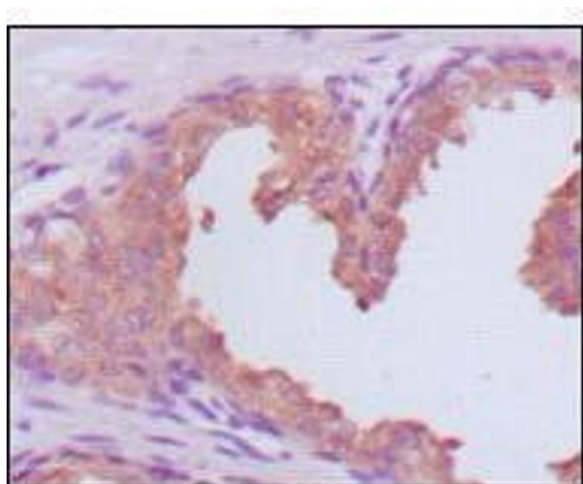
Flow Cytometry

Image 1. Flow cytometric analysis of PC-3 cells using KLK3 mouse mAb (right) and negative control (left).



Immunohistochemistry

Image 2. Immunohistochemical analysis of paraffin-embedded human prostate tissues using KLK3 mouse mAb with DAB staining.



Immunohistochemistry

Image 3. Immunohistochemical analysis of paraffin-embedded human prostate carcinoma tissues, showing cytoplasmic localization using KLK3 mouse mAb with DAB staining.

Please check the [product details page](#) for more images. Overall 4 images are available for ABIN969369.