

Datasheet for ABIN969390

anti-RUNX1 antibody**2** Images**2** Publications[Go to Product page](#)

Overview

Quantity:	100 µL
Target:	RUNX1
Reactivity:	Human
Host:	Mouse
Clonality:	Monoclonal
Conjugate:	This RUNX1 antibody is un-conjugated
Application:	Western Blotting (WB), ELISA

Product Details

Immunogen:	Synthesized peptide of human RUNX1.
Clone:	2B5
Isotype:	IgG1

Target Details

Target:	RUNX1
Alternative Name:	RUNX1 (RUNX1 Products)
Background:	Description: Core binding factor (CBF) is a heterodimeric transcription factor that binds to the core element of many enhancers and promoters. The protein encoded by this gene represents the alpha subunit of CBF and is thought to be involved in the development of normal hematopoiesis. Chromosomal translocations involving this gene are well-documented and have been associated with several types of leukemia. Three transcript variants encoding different

Target Details

isoforms have been found for this gene. (provided by RefSeq) Tissue specificity: Expressed in all tissues examined except brain and heart. Highest levels in thymus, bone marrow and peripheral blood.

Aliases: AML1, CBFA2, EVI-1, AMLCR1, PEBP2aB, AML1-EVI-1, RUNX1

Molecular Weight: 55 kDa

Gene ID: 861

HGNC: 861

Application Details

Application Notes: ELISA: 1:10000, WB: 1:500 - 1:2000

Restrictions: For Research Use only

Handling

Format: Liquid

Buffer: Ascitic fluid containing 0.03 % sodium azide.

Preservative: Sodium azide

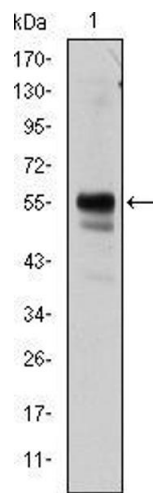
Precaution of Use: This product contains Sodium azide: a POISONOUS AND HAZARDOUS SUBSTANCE which should be handled by trained staff only.

Storage: 4 °C/-20 °C

Storage Comment: 4°C, -20°C for long term storage

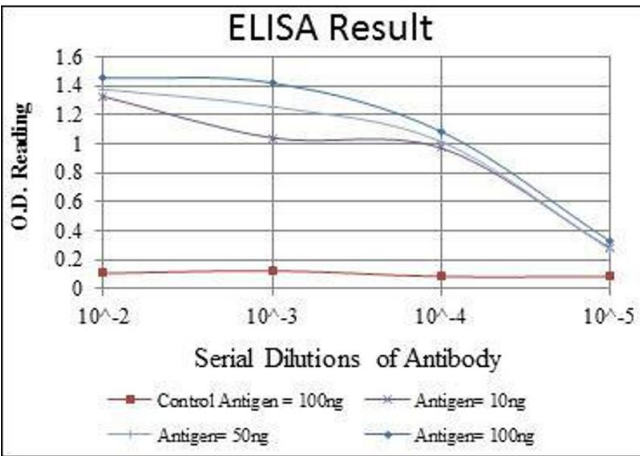
Publications

Product cited in: Li, Xia, Huang, Chen, Su, Li, Wang, Ding, Shao: "A strategy to rapidly identify the functional targets of microRNAs by combining bioinformatics and mRNA cytoplasmic/nucleic ratios in culture cells." in: **FEBS letters**, Vol. 584, Issue 14, pp. 3198-202, (2010) ([PubMed](#)).



Western Blotting

Image 1. Western blot analysis using RUNX1 mouse mAb against Jurkat cell lysate.



ELISA

Image 2. Red: Control Antigen (100 ng), Purple: Antigen (10 ng), Green: Antigen (50 ng), Blue: Antigen (100 ng),