



[Go to Product page](#)

Datasheet for ABIN969397

## anti-SKP1 antibody

6 Images

1 Publication

### Overview

Quantity:	100 µL
Target:	SKP1
Reactivity:	Human
Host:	Mouse
Clonality:	Monoclonal
Conjugate:	This SKP1 antibody is un-conjugated
Application:	Western Blotting (WB), ELISA, Immunohistochemistry (IHC), Flow Cytometry (FACS), Immunocytochemistry (ICC)

### Product Details

Immunogen:	Purified recombinant fragment of human SKP1 expressed in E. coli.
Clone:	4-00E-11
Isotype:	IgG1
Purification:	purified

### Target Details

Target:	SKP1
Alternative Name:	SKP1 ( <a href="#">SKP1 Products</a> )
Background:	Description: This gene encodes a component of SCF complexes, which are composed of this protein, cullin 1, a ring-box protein, and one member of the F-box family of proteins. This protein binds directly to the F-box motif found in F-box proteins. SCF complexes are involved in the

## Target Details

---

regulated ubiquitination of specific protein substrates, which targets them for degradation by the proteasome. Specific F-box proteins recognize different target protein(s), and many specific SCF substrates have been identified including regulators of cell cycle progression and development. Studies have also characterized the protein as an RNA polymerase II elongation factor. Alternative splicing of this gene results in two transcript variants. A related pseudogene has been identified on chromosome 7.

Aliases: OCP2, p19A, EMC19, SKP1A, OCP-II, TCEB1L, MGC34403

---

Molecular Weight: 19 kDa

---

Gene ID: 6500

---

HGNC: 6500

---

Pathways: [Cell Division Cycle](#), [Hedgehog Signaling](#), [Mitotic G1-G1/S Phases](#)

## Application Details

---

Application Notes: ELISA: 1:10000, WB: 1:500 - 1:2000, IHC: 1:200 - 1:1000, ICC: 1:200 - 1:1000, FCM: 1:200 - 1:400

---

Restrictions: For Research Use only

## Handling

---

Format: Liquid

---

Buffer: Ascitic fluid containing 0.03 % sodium azide.

---

Preservative: Sodium azide

---

Precaution of Use: This product contains Sodium azide: a POISONOUS AND HAZARDOUS SUBSTANCE which should be handled by trained staff only.

---

Storage: 4 °C/-20 °C

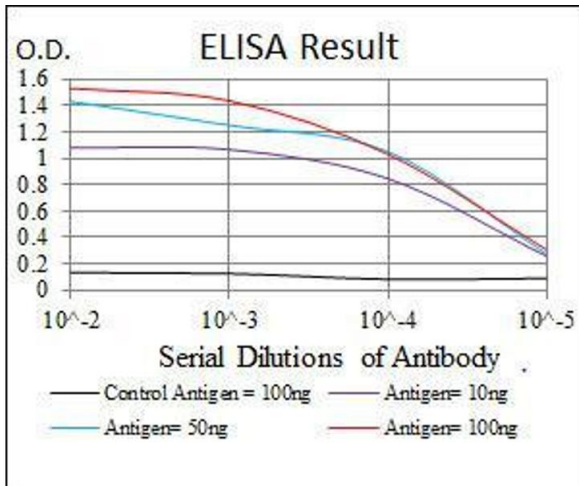
---

Storage Comment: 4°C, -20°C for long term storage

## Publications

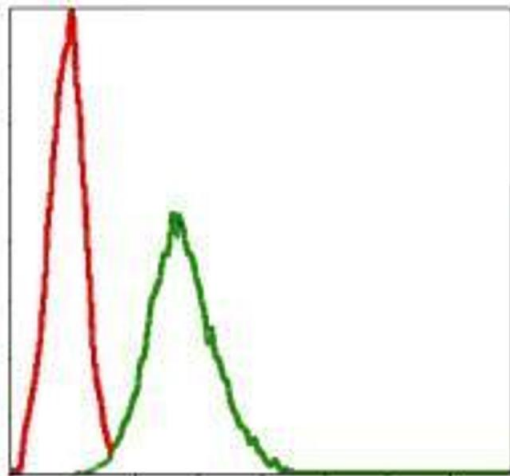
---

Product cited in: Li, Xia, Huang, Chen, Su, Li, Wang, Ding, Shao: "A strategy to rapidly identify the functional targets of microRNAs by combining bioinformatics and mRNA cytoplasmic/nucleic ratios in culture cells." in: **FEBS letters**, Vol. 584, Issue 14, pp. 3198-202, (2010) ([PubMed](#)).



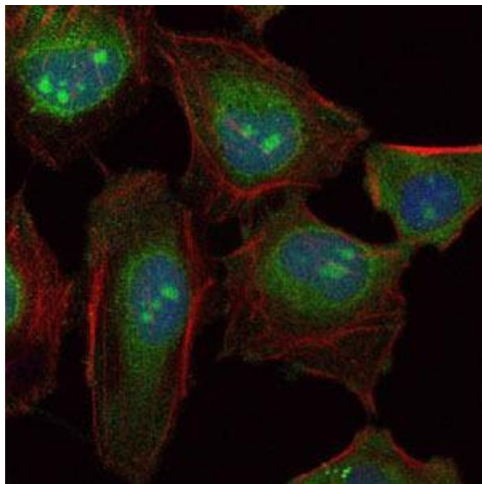
### ELISA

**Image 1.** Black line: Control Antigen (100 ng), Purple line: Antigen(10 ng), Blue line: Antigen (50 ng), Red line: Antigen (100 ng),



### Flow Cytometry

**Image 2.** Flow cytometric analysis of NIH/3T3 cells using SKP1 mouse mAb (green) and negative control (red).



### Immunofluorescence

**Image 3.** Immunofluorescence analysis of HeLa cells using SKP1 mouse mAb (green). Blue: DRAQ5 fluorescent DNA dye. Red: Actin filaments have been labeled with Alexa Fluor-555 phalloidin.

Please check the [product details page](#) for more images. Overall 6 images are available for ABIN969397.