



[Go to Product page](#)

Datasheet for ABIN969403

anti-SMAD4 antibody

4 Images

2 Publications

Overview

Quantity:	100 µL
Target:	SMAD4
Reactivity:	Human
Host:	Mouse
Clonality:	Monoclonal
Conjugate:	This SMAD4 antibody is un-conjugated
Application:	Western Blotting (WB), ELISA, Immunohistochemistry (IHC), Immunocytochemistry (ICC), Flow Cytometry (FACS)

Product Details

Immunogen:	Purified recombinant fragment of human SMAD4 expressed in E. coli. ,
Clone:	4G1C6
Isotype:	IgG1
Purification:	purified

Target Details

Target:	SMAD4
Alternative Name:	SMAD4 (SMAD4 Products)
Background:	Description: Common mediator of signal transduction by TGF-beta (transforming growth factor) superfamily, SMAD4 is the common SMAD (co-SMAD). Promotes binding of the SMAD2/SMAD4/FAST-1 complex to DNA and provides an activation function required for

Target Details

SMAD1 or SMAD2 to stimulate transcription. May act as a tumor suppressor. Mutations or deletions in this gene have been shown to result in pancreatic cancer, juvenile polyposis syndrome, and hereditary hemorrhagic telangiectasia syndrome.

Aliases: JIP, DPC4, MADH4, SMAD4

Molecular Weight: 65 kDa

Gene ID: 4089

HGNC: 4089

Pathways: [Cell Division Cycle](#), [Chromatin Binding](#), [Autophagy](#)

Application Details

Application Notes: ELISA: 1:10000, WB: 1:500 - 1:2000, IHC: 1:200 - 1:1000, ICC: 1:200 - 1:1000, FCM: 1:200 - 1:400

Restrictions: For Research Use only

Handling

Format: Liquid

Buffer: Ascitic fluid containing 0.03 % sodium azide.

Preservative: Sodium azide

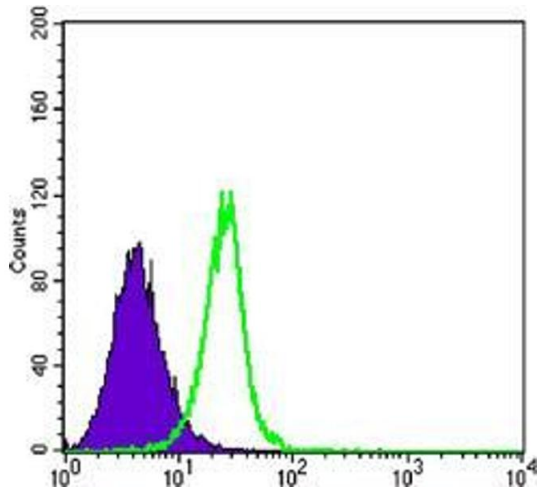
Precaution of Use: This product contains Sodium azide: a POISONOUS AND HAZARDOUS SUBSTANCE which should be handled by trained staff only.

Storage: 4 °C/-20 °C

Storage Comment: 4°C, -20°C for long term storage

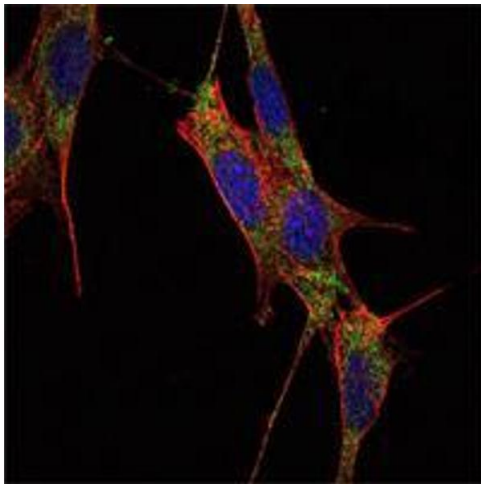
Publications

Product cited in: Wang, Wu, Zhou, Guo, Zheng, Wang, Bi, Liu, Zhou, Guo, Sha: "Mapping of the N-linked glycoproteome of human spermatozoa." in: **Journal of proteome research**, Vol. 12, Issue 12, pp. 5750-9, (2013) ([PubMed](#)).



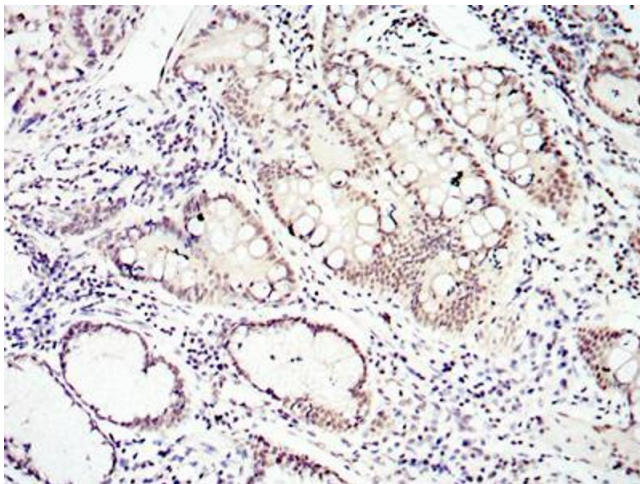
Flow Cytometry

Image 1. Flow cytometric analysis of K562 cells using SMAD4 mouse mAb (green) and negative control (purple).



Immunofluorescence

Image 2. Immunofluorescence analysis of NIH/3T3 cells using SMAD4 mouse mAb (green). Blue: DRAQ5 fluorescent DNA dye. Red: Actin filaments have been labeled with Alexa Fluor-555 phalloidin.



Immunohistochemistry

Image 3. Immunohistochemical analysis of paraffin-embedded lung cancer tissues using SMAD4 mouse mAb with DAB staining.

Please check the [product details page](#) for more images. Overall 4 images are available for ABIN969403.