

Datasheet for ABIN969406

**anti-SMC1A antibody**

4 Images

1 Publication

[Go to Product page](#)

## Overview

Quantity:	100 µL
Target:	SMC1A
Reactivity:	Human
Host:	Mouse
Clonality:	Monoclonal
Conjugate:	This SMC1A antibody is un-conjugated
Application:	Western Blotting (WB), Immunohistochemistry (IHC), ELISA, Flow Cytometry (FACS), Immunocytochemistry (ICC)

## Product Details

Immunogen:	Purified recombinant fragment of human SMC1 expressed in E. coli.
Clone:	5B6
Isotype:	IgG1
Purification:	purified

## Target Details

Target:	SMC1A
Alternative Name:	SMC1 ( <a href="#">SMC1A Products</a> )
Background:	Description: Proper cohesion of sister chromatids is a prerequisite for the correct segregation of chromosomes during cell division. The cohesin multiprotein complex is required for sister chromatid cohesion. This complex is composed partly of two structural maintenance of

## Target Details

chromosomes (SMC) proteins, SMC3 and either SMC1L2 or the protein encoded by this gene. Most of the cohesin complexes dissociate from the chromosomes before mitosis, although those complexes at the kinetochore remain. Therefore, the encoded protein is thought to be an important part of functional kinetochores. In addition, this protein interacts with BRCA1 and is phosphorylated by ATM, indicating a potential role for this protein in DNA repair. This gene, which belongs to the SMC gene family, is located in an area of the X-chromosome that escapes X inactivation.

Aliases: SMC1, SMCB, CDLS2, SB1.8, SMC1L1, DXS423E, KIAA0178, MGC138332, SMC1alpha, DKFZp686L19178, SMC1A

Molecular Weight: 143 kDa

Gene ID: 8243

HGNC: 8243

Pathways: [Stem Cell Maintenance](#)

## Application Details

Application Notes: ELISA: 1:10000, WB: 1:500 - 1:2000, IHC: 1:200 - 1:1000, ICC: 1:200 - 1:1000, FCM: 1:200 - 1:400

Restrictions: For Research Use only

## Handling

Format: Liquid

Buffer: Purified antibody in PBS with 0.05 % sodium azide

Preservative: Sodium azide

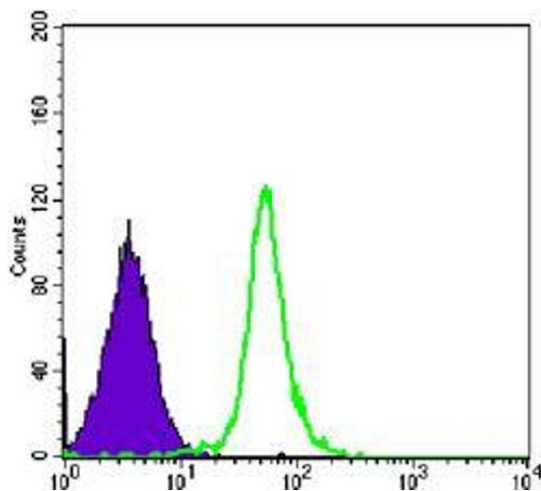
Precaution of Use: This product contains Sodium azide: a POISONOUS AND HAZARDOUS SUBSTANCE which should be handled by trained staff only.

Storage: 4 °C/-20 °C

Storage Comment: 4°C, -20°C for long term storage

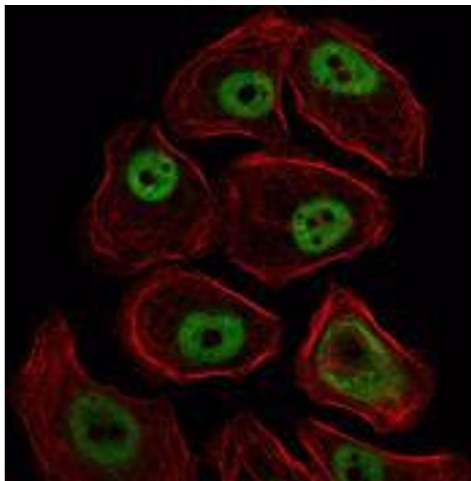
## Publications

Product cited in: Li, Xia, Huang, Chen, Su, Li, Wang, Ding, Shao: "A strategy to rapidly identify the functional targets of microRNAs by combining bioinformatics and mRNA cytoplasmic/nucleic ratios in culture cells." in: **FEBS letters**, Vol. 584, Issue 14, pp. 3198-202, (2010) ([PubMed](#)).



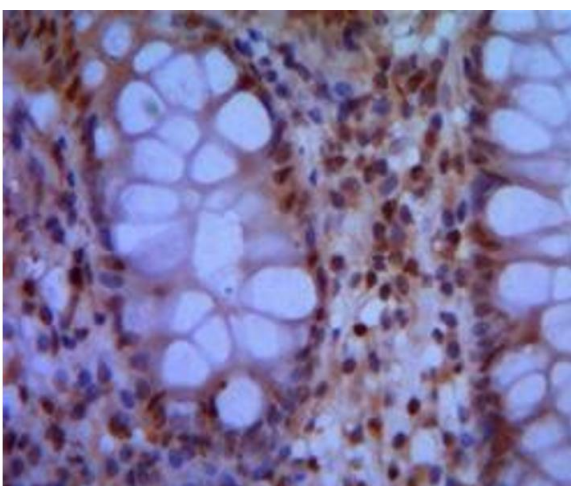
#### Flow Cytometry

**Image 1.** Flow cytometric analysis of Hela cells using SMC1 mouse mAb (green) and negative control (purple).



#### Immunofluorescence

**Image 2.** Immunofluorescence analysis of NIH/3T3 cells using SMC1 mouse mAb (green). Red: Actin filaments have been labeled with Alexa Fluor-555 phalloidin.



#### Immunohistochemistry

**Image 3.** Immunohistochemical analysis of paraffin-embedded human colon using SMC1 mouse mAb with DAB staining.

Please check the [product details page](#) for more images. Overall 4 images are available for ABIN969406.