



## Datasheet for ABIN969408 anti-SMN1 antibody



[Go to Product page](#)

5 Images

1 Publication

### Overview

Quantity:	100 µL
Target:	SMN1
Reactivity:	Human, Monkey
Host:	Mouse
Clonality:	Monoclonal
Application:	Western Blotting (WB), ELISA, Immunohistochemistry (IHC), Immunocytochemistry (ICC)

### Product Details

Immunogen:	Purified recombinant fragment of human SMN1 expressed in E. coli.
Clone:	5H1
Isotype:	IgG1
Purification:	purified

### Target Details

Target:	SMN1
Alternative Name:	SMN1 ( <a href="#">SMN1 Products</a> )
Background:	Description: This gene is part of a 500 kb inverted duplication on chromosome 5q13. This duplicated region contains at least four genes and repetitive elements which make it prone to rearrangements and deletions. The repetitiveness and complexity of the sequence have also caused difficulty in determining the organization of this genomic region. The telomeric and centromeric copies of this gene are nearly identical and encode the same protein.

## Target Details

---

Aliases: SMA, SMN, SMA1, SMA2, SMA3, SMA4, SMA@, SMN2, SMNT, BCD541, T-BCD541

Molecular Weight: 39 kDa

Gene ID: 6606

HGNC: 6606

Pathways: [Ribonucleoprotein Complex Subunit Organization](#)

## Application Details

---

Application Notes: ELISA: 1:10000, WB: 1:500 - 1:2000, IHC: 1:200 - 1:1000, ICC: 1:200 - 1:1000

Restrictions: For Research Use only

## Handling

---

Format: Liquid

Buffer: Ascitic fluid containing 0.03 % sodium azide.

Preservative: Sodium azide

Precaution of Use: This product contains Sodium azide: a POISONOUS AND HAZARDOUS SUBSTANCE which should be handled by trained staff only.

Storage: 4 °C/-20 °C

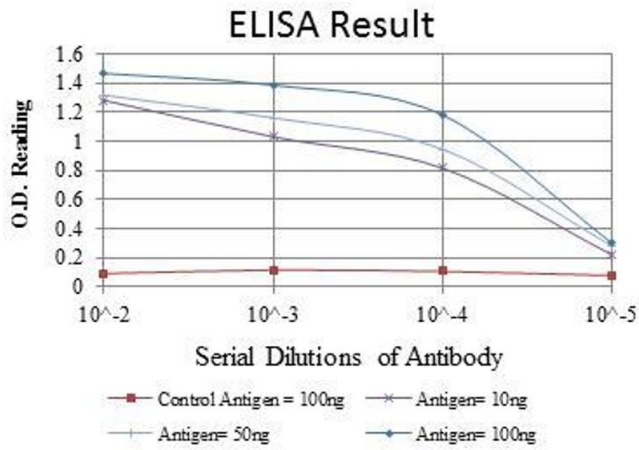
Storage Comment: 4°C, -20°C for long term storage

## Publications

---

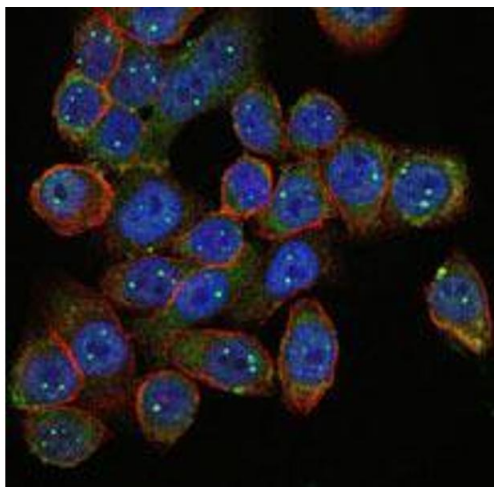
Product cited in: Toka, Dunaway, Smaltz, Szulc-Dąbrowska, Drnevich, Mielcarska, Bossowska-Nowicka, Schweizer: "Bacterial and viral pathogen-associated molecular patterns induce divergent early transcriptomic landscapes in a bovine macrophage cell line." in: **BMC genomics**, Vol. 20, Issue 1, pp. 15, (2019) ([PubMed](#)).

Murakami, Maeda, Yonezawa, Matsuki: "CC chemokine ligand 2 and CXC chemokine ligand 8 as neutrophil chemoattractant factors in canine idiopathic polyarthritis." in: **Veterinary immunology and immunopathology**, Vol. 182, pp. 52-58, (2016) ([PubMed](#)).



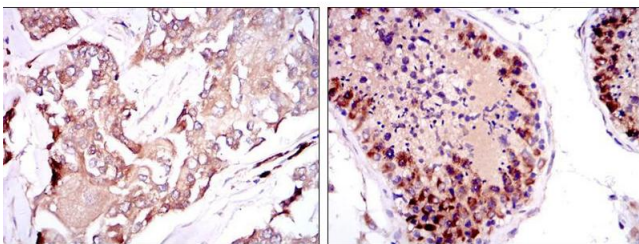
### ELISA

**Image 1.** Red: Control Antigen (100 ng), Purple: Antigen (10 ng), Green: Antigen (50 ng), Blue: Antigen (100 ng),



### Immunofluorescence

**Image 2.** Immunofluorescence analysis of HepG2 cells using SMN1 mouse mAb (green). Blue: DRAQ5 fluorescent DNA dye. Red: Actin filaments have been labeled with Alexa Fluor-555 phalloidin.



### Immunohistochemistry

**Image 3.** Immunohistochemical analysis of paraffin-embedded breast cancer tissues (left) and testis tissues (right) using SMN1 mouse mAb with DAB staining.

Please check the [product details page](#) for more images. Overall 5 images are available for ABIN969408.