



[Go to Product page](#)

Datasheet for ABIN969415

anti-SPI1 antibody (AA 124-271)

4 Images

1 Publication

Overview

Quantity:	0.1 mg
Target:	SPI1
Binding Specificity:	AA 124-271
Reactivity:	Human
Host:	Mouse
Clonality:	Monoclonal
Conjugate:	This SPI1 antibody is un-conjugated
Application:	Western Blotting (WB), ELISA, Flow Cytometry (FACS)

Product Details

Immunogen:	Purified recombinant fragment of human SPI1 (AA: 124-271) expressed in E. coli., ,
Clone:	5C7
Isotype:	IgG1
Purification:	purified

Target Details

Target:	SPI1
Alternative Name:	SPI1 (SPI1 Products)
Background:	Description: This gene encodes an ETS-domain transcription factor that activates gene expression during myeloid and B-lymphoid cell development. The nuclear protein binds to a

Target Details

purine-rich sequence known as the PU-box found near the promoters of target genes, and regulates their expression in coordination with other transcription factors and cofactors. The protein can also regulate alternative splicing of target genes. Multiple transcript variants encoding different isoforms have been found for this gene.

Aliases: OF, PU.1, SFPI1, SPI-1, SPI-A

Molecular Weight: 42 kDa

Gene ID: 6688

HGNC: 6688

Pathways: [Stem Cell Maintenance](#)

Application Details

Application Notes: ELISA: 1:10000, WB: 1:500 - 1:2000, FCM: 1:200 - 1:400

Restrictions: For Research Use only

Handling

Format: Liquid

Buffer: Ascitic fluid containing 0.03 % sodium azide.

Preservative: Sodium azide

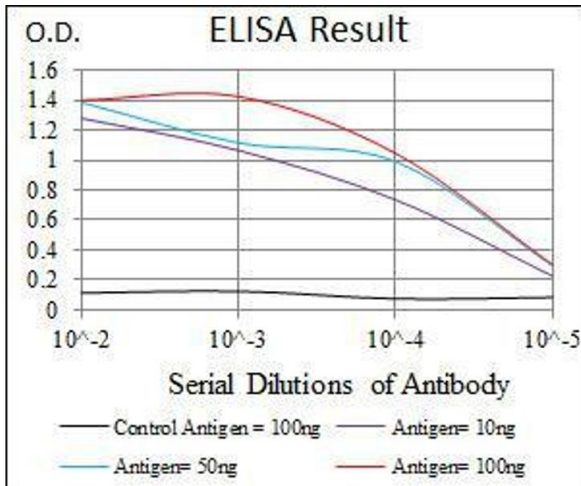
Precaution of Use: This product contains Sodium azide: a POISONOUS AND HAZARDOUS SUBSTANCE which should be handled by trained staff only.

Storage: 4 °C/-20 °C

Storage Comment: 4°C, -20°C for long term storage

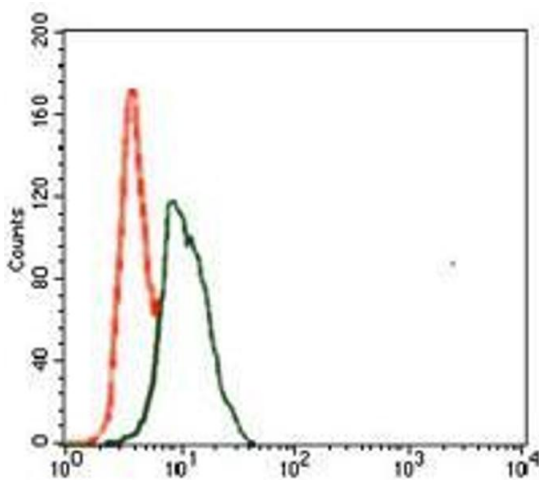
Publications

Product cited in: Xu, Wang, Wang, Wu, Zhao, Zhu, Qiu, Xue, Shao, Guo, Li: "PU.1 can regulate the ZNF300 promoter in APL-derived promyelocytes HL-60." in: **Leukemia research**, Vol. 34, Issue 12, pp. 1636-46, (2010) ([PubMed](#)).



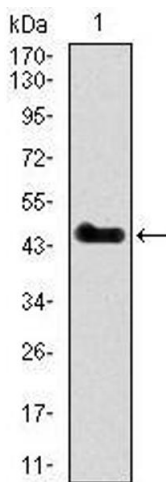
ELISA

Image 1. Black line: Control Antigen (100 ng), Purple line: Antigen(10 ng), Blue line: Antigen (50 ng), Red line: Antigen (100 ng),



Flow Cytometry

Image 2. Flow cytometric analysis of HeLa cells using SPI1 mouse mAb (green) and negative control (red).



Western Blotting

Image 3. Western blot analysis using SPI1 mAb against human SPI1 recombinant protein. (Expected MW is 46.9 kDa)

Please check the [product details page](#) for more images. Overall 4 images are available for ABIN969415.