

Datasheet for ABIN969436

anti-THAP11 antibody

4 Images

2 Publications

[Go to Product page](#)

Overview

Quantity:	100 µL
Target:	THAP11
Reactivity:	Human
Host:	Mouse
Clonality:	Monoclonal
Application:	Western Blotting (WB), ELISA, Immunohistochemistry (IHC), Flow Cytometry (FACS), Immunocytochemistry (ICC)

Product Details

Immunogen:	Purified recombinant fragment of human THAP11 expressed in E. coli.
Clone:	3F3
Isotype:	IgG1
Purification:	purified

Target Details

Target:	THAP11
Alternative Name:	THAP11 (THAP11 Products)
Background:	<p>Description: The protein encoded by this gene contains a THAP domain, which is a conserved DNA-binding domain that has striking similarity to the site-specific DNA-binding domain (DBD) of Drosophila P element transposases.</p> <p>Aliases: RONIN, CTG-B43a, CTG-B45d, HRIHFB2206, THAP11</p>

Target Details

Molecular Weight:	44 kDa
Gene ID:	57215
HGNC:	57215

Application Details

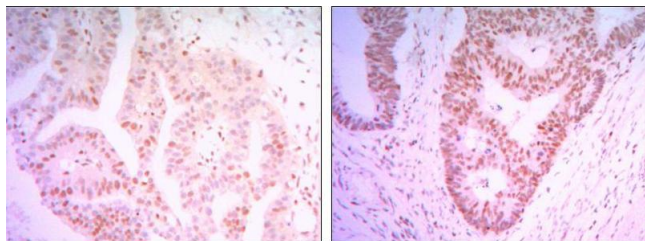
Application Notes:	ELISA: 1:10000, WB: 1:500 - 1:2000, IHC: 1:200 - 1:1000, ICC: 1:200 - 1:1000, FCM: 1:200 - 1:400
Restrictions:	For Research Use only

Handling

Format:	Liquid
Buffer:	Ascitic fluid containing 0.03 % sodium azide.
Preservative:	Sodium azide
Precaution of Use:	This product contains Sodium azide: a POISONOUS AND HAZARDOUS SUBSTANCE which should be handled by trained staff only.
Storage:	4 °C/-20 °C
Storage Comment:	4°C, -20°C for long term storage

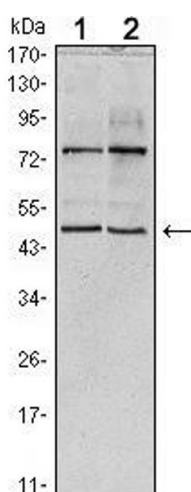
Publications

Product cited in:	<p>Jan, Adolfsson, Allaman, Buccarello, Magistretti, Pfeifer, Muhs, Lashuel: "Abeta42 neurotoxicity is mediated by ongoing nucleated polymerization process rather than by discrete Abeta42 species." in: The Journal of biological chemistry, Vol. 286, Issue 10, pp. 8585-96, (2011) (PubMed).</p> <p>Deshmukh, Salehzadeh, Metayer-Coustard, Fahlman, Nair, Al-Khalili: "Post-transcriptional gene silencing of ribosomal protein S6 kinase 1 restores insulin action in leucine-treated skeletal muscle." in: Cellular and molecular life sciences : CMLS, Vol. 66, Issue 8, pp. 1457-66, (2009) (PubMed).</p>
-------------------	--



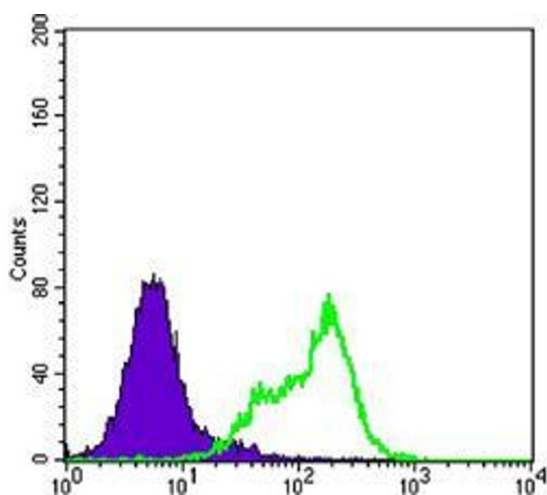
Immunohistochemistry

Image 1. Immunohistochemical analysis of paraffin-embedded colon cancer tissues (left) and ovary cancer tissues (right) using THAP11 mouse mAb with DAB staining.



Western Blotting

Image 2. Western blot analysis using THAP11 mouse mAb against HeLa (1) and NTERA-2 (2) cell lysate.



Flow Cytometry

Image 3. Flow cytometric analysis of HeLa cells using THAP11 mouse mAb (green) and negative control (purple).

Please check the [product details page](#) for more images. Overall 4 images are available for ABIN969436.