

Datasheet for ABIN969445 anti-Cardiac Troponin T2 antibody



[Go to Product page](#)

3 Images

1 Publication

Overview

Quantity:	100 µL
Target:	Cardiac Troponin T2 (cTnT)
Reactivity:	Human
Host:	Mouse
Clonality:	Monoclonal
Conjugate:	This Cardiac Troponin T2 antibody is un-conjugated
Application:	Western Blotting (WB), ELISA, Flow Cytometry (FACS)

Product Details

Immunogen:	Purified recombinant fragment of human troponin T2 expressed in E. coli.
Clone:	1G1
Isotype:	IgG1
Purification:	purified

Target Details

Target:	Cardiac Troponin T2 (cTnT)
Abstract:	cTnT Products
Background:	<p>Description: The protein encoded by this gene is the tropomyosin-binding subunit of the troponin complex, which is located on the thin filament of striated muscles and regulates muscle contraction in response to alterations in intracellular calcium ion concentration.</p> <p>Mutations in this gene have been associated with familial hypertrophic cardiomyopathy as well</p>

Target Details

as with dilated cardiomyopathy. Transcripts for this gene undergo alternative splicing that results in many tissue-specific isoforms, however, the full-length nature of some of these variants has not yet been determined.

Aliases: CMH2, RCM3, TnTC, cTnT, CMPD2, LVNC6

Molecular Weight: 36 kDa

Gene ID: 7139

HGNC: 7139

Application Details

Application Notes: ELISA: 1:10000, WB: 1:500 - 1:2000, FCM: 1:200 - 1:400

Restrictions: For Research Use only

Handling

Format: Liquid

Buffer: Ascitic fluid containing 0.03 % sodium azide.

Preservative: Sodium azide

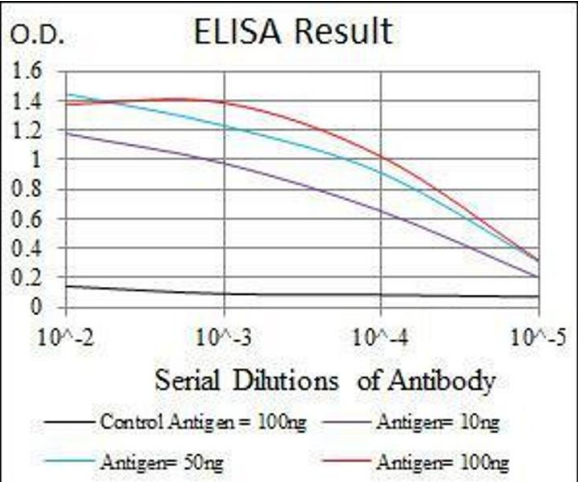
Precaution of Use: This product contains Sodium azide: a POISONOUS AND HAZARDOUS SUBSTANCE which should be handled by trained staff only.

Storage: 4 °C/-20 °C

Storage Comment: 4°C, -20°C for long term storage

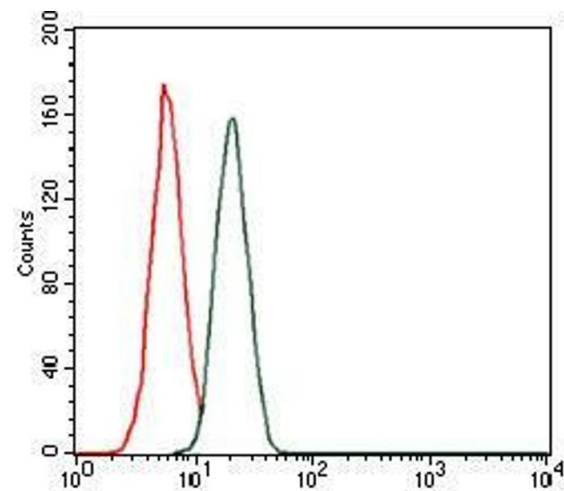
Publications

Product cited in: Jacques, Pereira, Maia, Cuzzi, Ramos-e-Silva: "Expression of cytokeratins 10, 13, 14 and 19 in oral lichen planus." in: **Journal of oral science**, Vol. 51, Issue 3, pp. 355-65, (2009) ([PubMed](#)).



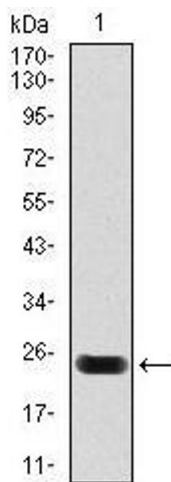
ELISA

Image 1. Black line: Control Antigen (100 ng), Purple line: Antigen(10 ng), Blue line: Antigen (50 ng), Red line: Antigen (100 ng),



Flow Cytometry

Image 2. Flow cytometric analysis of MCF-7 cells using troponin T2 mouse mAb (green) and negative control (red).



Western Blotting

Image 3. Western blot analysis using troponin T2 mAb against human troponin T2 (AA: 88-249) recombinant protein. (Expected MW is 25.1 kDa)