

Datasheet for ABIN969450

**anti-UBA7 antibody**[Go to Product page](#)**1** Image**2** Publications

## Overview

Quantity:	100 µL
Target:	UBA7
Reactivity:	Human
Host:	Mouse
Clonality:	Monoclonal
Conjugate:	This UBA7 antibody is un-conjugated
Application:	Western Blotting (WB), ELISA

## Product Details

Immunogen:	Purified recombinant fragment of human UBE1L expressed in E. coli.
Clone:	5B10
Isotype:	IgG1
Purification:	purified

## Target Details

Target:	UBA7
Alternative Name:	UBE1L ( <a href="#">UBA7 Products</a> )
Background:	Description: The modification of proteins with ubiquitin is an important cellular mechanism for targeting. Tissue specificity: Expressed in a variety of normal and tumor cell types, but is reduced in lung cancer cell lines abnormal or short-lived proteins for degradation. Ubiquitination involves at least three classes of enzymes: ubiquitin-activating enzymes, or E1s, ubiquitin-

## Target Details

conjugating enzymes, or E2s, and ubiquitin-protein ligases, or E3s. This gene encodes a member of the E1 ubiquitin-activating enzyme family. The encoded enzyme is a retinoid target that triggers promyelocytic leukemia (PML)/retinoic acid receptor alpha (RARalpha) degradation and apoptosis in acute promyelocytic leukemia, where it is involved in the conjugation of the ubiquitin-like interferon-stimulated gene 15 protein.

Aliases: D8, UBE2, UBA1B, UBE1L, MGC12713, UBA7

Molecular Weight:	112 kDa
-------------------	---------

Gene ID:	7318
----------	------

HGNC:	7318
-------	------

## Application Details

Application Notes:	ELISA: 1:10000, WB: 1:500 - 1:2000
--------------------	------------------------------------

Restrictions:	For Research Use only
---------------	-----------------------

## Handling

Format:	Liquid
---------	--------

Buffer:	Ascitic fluid containing 0.03 % sodium azide.
---------	---

Preservative:	Sodium azide
---------------	--------------

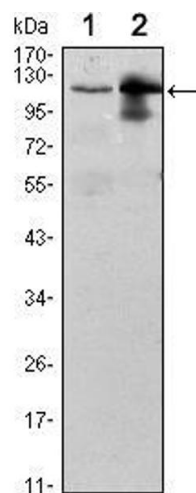
Precaution of Use:	This product contains Sodium azide: a POISONOUS AND HAZARDOUS SUBSTANCE which should be handled by trained staff only.
--------------------	--

Storage:	4 °C/-20 °C
----------	-------------

Storage Comment:	4°C, -20°C for long term storage
------------------	----------------------------------

## Publications

Product cited in:	Wang, Wu, Zhou, Guo, Zheng, Wang, Bi, Liu, Zhou, Guo, Sha: "Mapping of the N-linked glycoproteome of human spermatozoa." in: <b>Journal of proteome research</b> , Vol. 12, Issue 12, pp. 5750-9, (2013) ( <a href="#">PubMed</a> ).
-------------------	--



Western Blotting

**Image 1.** Western blot analysis using UBE1L mouse mAb against Raji (1) and THP-1 (2) cell lysate.