

Datasheet for ABIN969470

anti-S100A6 antibody**2** Images**2** Publications[Go to Product page](#)

Overview

Quantity:	100 µL
Target:	S100A6
Reactivity:	Human
Host:	Mouse
Clonality:	Monoclonal
Application:	Western Blotting (WB), Immunohistochemistry (IHC), ELISA

Product Details

Immunogen:	Purified recombinant fragment of calyculin expressed in E. coli.
Clone:	7D11
Isotype:	IgG1
Purification:	purified

Target Details

Target:	S100A6
Alternative Name:	Calyculin (S100A6 Products)
Background:	Description: Calyculin encoded by this gene is a member of the S100 family of proteins containing 2 EF-hand calcium-binding motifs. S100 proteins are localized in the cytoplasm and/or nucleus of a wide range of cells, and involved in the regulation of a number of cellular processes such as cell cycle progression and differentiation. S100 genes include at least 13 members which are located as a cluster on chromosome 1q21. This protein may function in

Target Details

stimulation of Ca²⁺-dependent insulin release, stimulation of prolactin secretion, and exocytosis. Chromosomal rearrangements and altered expression of this gene have been implicated in melanoma.

Aliases: S100A6, 2A9, PRA, 5B10, CABP, CACY

Gene ID: 27101

HGNC: 27101

Pathways: [S100 Proteins](#)

Application Details

Application Notes: ELISA: 1:10000, WB: 1:500 - 1:2000, IHC: 1:200 - 1:1000

Restrictions: For Research Use only

Handling

Format: Liquid

Buffer: Purified antibody in PBS containing 0.03 % sodium azide.

Preservative: Sodium azide

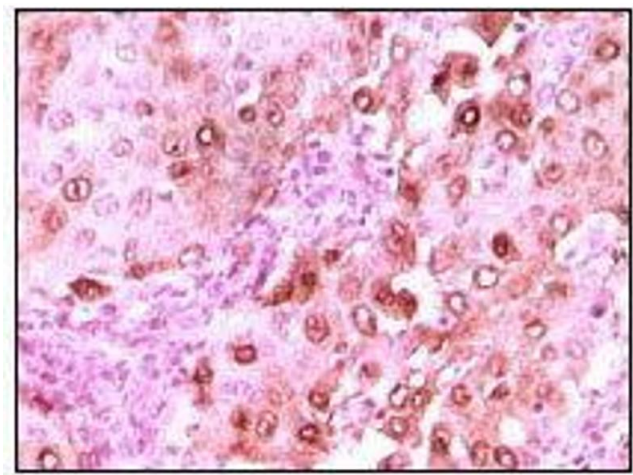
Precaution of Use: This product contains Sodium azide: a POISONOUS AND HAZARDOUS SUBSTANCE which should be handled by trained staff only.

Storage: 4 °C/-20 °C

Storage Comment: 4°C, -20°C for long term storage

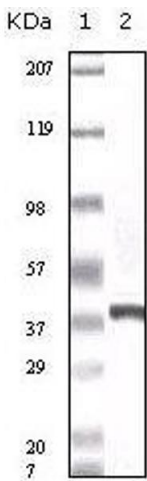
Publications

Product cited in: Koc, Cimen, Kumcuoglu, Abu, Akpinar, Haque, Spremulli, Koc: "Identification and characterization of CHCHD1, AURKAIP1, and CRIF1 as new members of the mammalian mitochondrial ribosome." in: **Frontiers in physiology**, Vol. 4, pp. 183, (2013) ([PubMed](#)).



Immunohistochemistry

Image 1. Immunohistochemical analysis of paraffin-embedded human brain glioma tissue showing nuclear localization using calcyclin mouse mAb with DAB staining.



Western Blotting

Image 2. Western blot analysis using calcyclin mouse mAb against truncated calcyclin recombinant protein.