

Datasheet for ABIN969476

**anti-CHEK1 antibody**[Go to Product page](#)**2** Images**1** Publication

## Overview

Quantity:	100 µL
Target:	CHEK1
Reactivity:	Human, Mouse
Host:	Mouse
Clonality:	Monoclonal
Conjugate:	This CHEK1 antibody is un-conjugated
Application:	Western Blotting (WB), ELISA

## Product Details

Immunogen:	Purified recombinant fragment of CHK1 expressed in E. coli.
Clone:	2G1D5
Isotype:	IgG1
Purification:	purified

## Target Details

Target:	CHEK1
Alternative Name:	CHK1 ( <a href="#">CHEK1 Products</a> )
Background:	Description: CHK1, also known as CHEK1, it is a kinase that phosphorylates cdc25, an important phosphatase in cell cycle control, particularly for entry into mitosis. Cdc25, when phosphorylated on serine 216 by chk1 becomes bound by an adaptor protein in the cytoplasm. Therefore it is inhibited from removing the inhibiting phosphate from MPF (mitotic/maturation

## Target Details

promoting factor) added by Wee1. Consequently, a cell is prevented from entering mitosis.  
Chk1 can also phosphorylate p53 at Ser20 in vitro.  
Aliases: CHEK1

Molecular Weight: 56 kDa

Gene ID: 1111

HGNC: 1111

Pathways: [p53 Signaling](#), [Apoptosis](#), [Cell Division Cycle](#), [DNA Damage Repair](#)

## Application Details

Application Notes: ELISA: 1:10000, WB: 1:500 - 1:2000

Restrictions: For Research Use only

## Handling

Format: Liquid

Buffer: Purified antibody in PBS containing 0.03 % sodium azide.

Preservative: Sodium azide

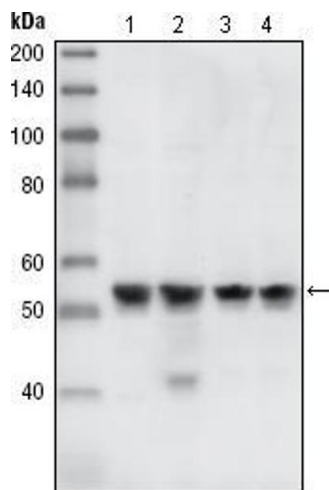
Precaution of Use: This product contains Sodium azide: a POISONOUS AND HAZARDOUS SUBSTANCE which should be handled by trained staff only.

Storage: 4 °C/-20 °C

Storage Comment: 4°C, -20°C for long term storage

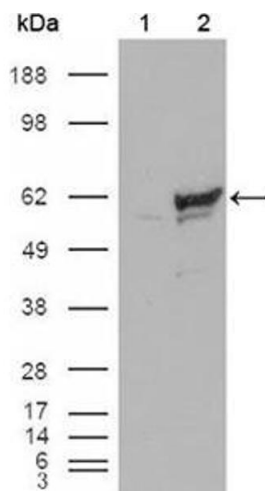
## Publications

Product cited in: OConnell, Raleigh, Verkade, Nurse: "Chk1 is a wee1 kinase in the G2 DNA damage checkpoint inhibiting cdc2 by Y15 phosphorylation." in: **The EMBO journal**, Vol. 16, Issue 3, pp. 545-54, (1997) ([PubMed](#)).



#### Western Blotting

**Image 1.** Western blot analysis using CHK1 mouse mAb against A431 (1), HeLa (2), NIH/3T3 (3) and K562 (4) cell lysate.



#### Western Blotting

**Image 2.** Western blot analysis using CHK1 mouse mAb against HEK293T cells transfected with the pCMV6-ENTRY control (1) and pCMV6-ENTRY CHK1 cDNA (2).