



Datasheet for ABIN969500 anti-ALPL antibody



[Go to Product page](#)

5 Images

2 Publications

Overview

Quantity:	0.1 mg
Target:	ALPL
Reactivity:	Human
Host:	Mouse
Clonality:	Monoclonal
Conjugate:	This ALPL antibody is un-conjugated
Application:	Western Blotting (WB), ELISA, Immunohistochemistry (IHC), Flow Cytometry (FACS)

Product Details

Immunogen:	Purified recombinant fragment of human ALPL expressed in E. coli.
Clone:	2F4
Isotype:	IgG1
Purification:	purified

Target Details

Target:	ALPL
Alternative Name:	ALPL (ALPL Products)
Background:	Description: There are at least four distinct but related alkaline phosphatases: intestinal, placental, placental-like, and liver/bone/kidney (tissue non-specific). The first three are located together on chromosome 2, while the tissue non-specific form is located on chromosome 1. The product of this gene is a membrane bound glycosylated enzyme that is not expressed in

Target Details

any particular tissue and is, therefore, referred to as the tissue-nonspecific form of the enzyme. The exact physiological function of the alkaline phosphatases is not known. A proposed function of this form of the enzyme is matrix mineralization, however, mice that lack a functional form of this enzyme show normal skeletal development. This enzyme has been linked directly to hypophosphatasia, a disorder that is characterized by hypercalcemia and includes skeletal defects. The character of this disorder can vary, however, depending on the specific mutation since this determines age of onset and severity of symptoms. Alternatively spliced transcript variants have been described.

Aliases: HOPS, TNAP, APTNAP, TNSALP, AP-TNAP

Molecular Weight: 57.3 kDa

Gene ID: 249

HGNC: 249

Application Details

Application Notes: ELISA: 1:10000, WB: 1:500 - 1:2000, IHC: 1:200 - 1:1000, FCM: 1:200 - 1:400

Restrictions: For Research Use only

Handling

Format: Liquid

Buffer: Purified antibody in PBS with 0.05 % sodium azide

Preservative: Sodium azide

Precaution of Use: This product contains Sodium azide: a POISONOUS AND HAZARDOUS SUBSTANCE which should be handled by trained staff only.

Storage: 4 °C/-20 °C

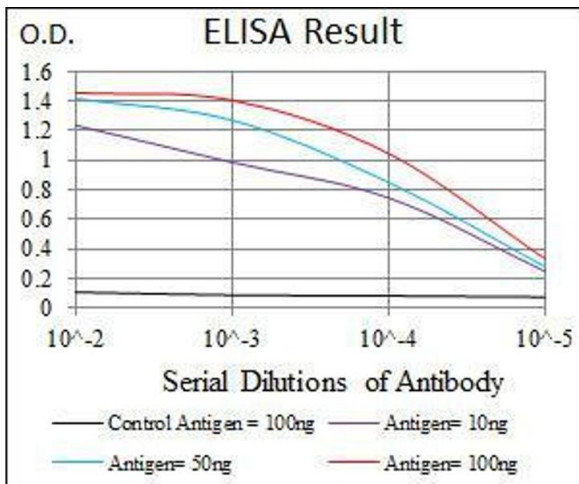
Storage Comment: 4°C, -20°C for long term storage

Publications

Product cited in: Dupasquier, Abdel-Samad, Glazer, Bastide, Jay, Joubert, Cavaillès, Blache, Quittau-Prévostel: "A new mechanism of SOX9 action to regulate PKCalpha expression in the intestine epithelium." in: **Journal of cell science**, Vol. 122, Issue Pt 13, pp. 2191-6, (2009) ([PubMed](#)).

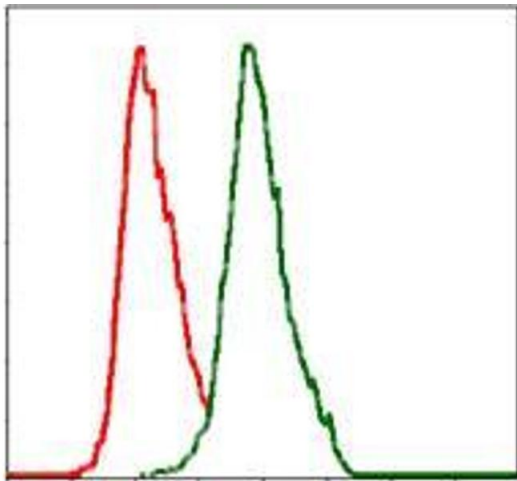
Gordon, Tan, Benko, Fitzpatrick, Lyonnet, Farlie: "Long-range regulation at the SOX9 locus in development and disease." in: **Journal of medical genetics**, Vol. 46, Issue 10, pp. 649-56, (2009) ([PubMed](#)).

Images



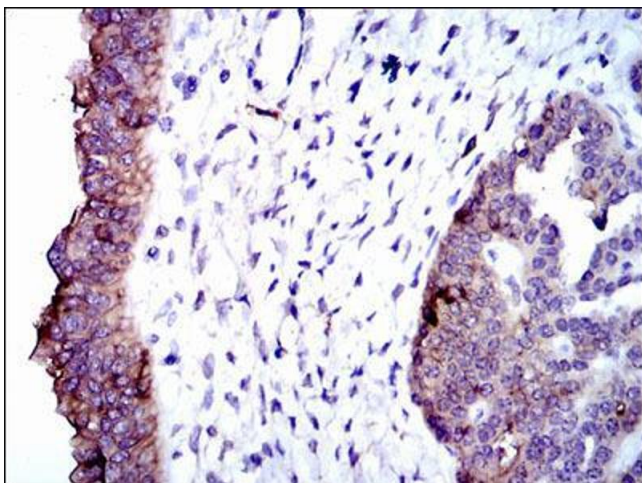
ELISA

Image 1. Black line: Control Antigen (100 ng), Purple line: Antigen(10 ng), Blue line: Antigen (50 ng), Red line: Antigen (100 ng),



Flow Cytometry

Image 2. Flow cytometric analysis of MCF-7 cells using ALPL mouse mAb (green) and negative control (red).



Immunohistochemistry

Image 3. Immunohistochemical analysis of paraffin-embedded ovarian cancer tissues using ALPL mouse mAb with DAB staining.

Images

Please check the [product details page](#) for more images. Overall 5 images are available for ABIN969500.