

Datasheet for ABIN969501
anti-ARHGDI2 antibody (AA 1-204)

6 Images

3 Publications

[Go to Product page](#)

Overview

Quantity:	0.1 mg
Target:	ARHGDI2
Binding Specificity:	AA 1-204
Reactivity:	Human, Mouse, Monkey
Host:	Mouse
Clonality:	Monoclonal
Conjugate:	This ARHGDI2 antibody is un-conjugated
Application:	Western Blotting (WB), ELISA, Flow Cytometry (FACS), Immunocytochemistry (ICC)

Product Details

Immunogen:	Purified recombinant fragment of human ARHGDI2 (AA: FULL(1-204)) expressed in E. coli.
Clone:	2G3
Isotype:	IgG1
Purification:	purified

Target Details

Target:	ARHGDI2
Alternative Name:	ARHGDI2 (ARHGDI2 Products)
Background:	Description: Aplysia Ras-related homologs (ARHs), also called Rho genes, belong to the RAS gene superfamily encoding small guanine nucleotide exchange (GTP/GDP) factors. The ARH

Target Details

	proteins may be kept in the inactive, GDP-bound state by interaction with GDP dissociation inhibitors, such as ARHGDIA Aliases: GDIA1,RHOGDI,RHOGDI-1
Molecular Weight:	26 kDa
Gene ID:	396
HGNC:	396
Pathways:	Neurotrophin Signaling Pathway

Application Details

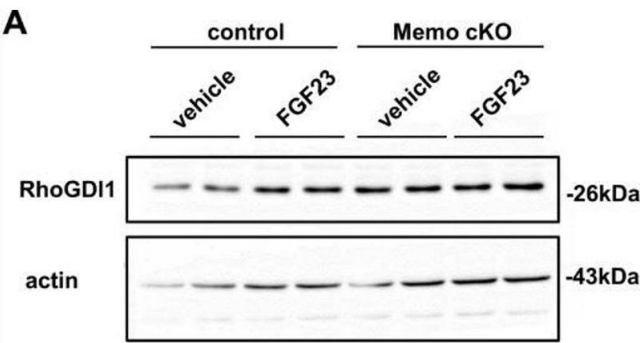
Application Notes:	ELISA: 1:10000, WB: 1:500 - 1:2000, ICC: 1:200 - 1:1000, FCM: 1:200 - 1:400
Restrictions:	For Research Use only

Handling

Format:	Liquid
Buffer:	Purified antibody in PBS with 0.05 % sodium azide
Preservative:	Sodium azide
Precaution of Use:	This product contains Sodium azide: a POISONOUS AND HAZARDOUS SUBSTANCE which should be handled by trained staff only.
Storage:	4 °C/-20 °C
Storage Comment:	4°C, -20°C for long term storage

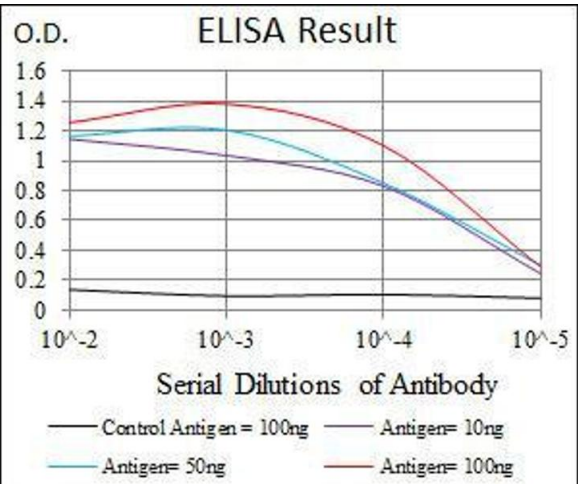
Publications

Product cited in:	Wang, Wu, Zhou, Guo, Zheng, Wang, Bi, Liu, Zhou, Guo, Sha: "Mapping of the N-linked glycoproteome of human spermatozoa." in: Journal of proteome research , Vol. 12, Issue 12, pp. 5750-9, (2013) (PubMed).
-------------------	--



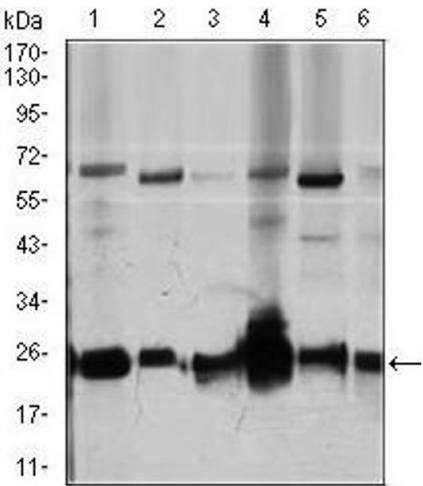
Western Blotting

Image 1. Malfunctioning Rho-GTPase network in kidneys from Memo cKO (cKO) mice. Western blots of whole kidneys are shown for indicated proteins (A–D) and their respective densitometric quantification against actin as a loading control. Source: PMID36434320



ELISA

Image 2. Black line: Control Antigen (100 ng), Purple line: Antigen(10 ng), Blue line: Antigen (50 ng), Red line: Antigen (100 ng),



Western Blotting

Image 3. Western blot analysis using ARHGDI1 mouse mAb against Jurkat (1), HeLa (2), NIH3T3 (3), C6 (4), K562 (5), and COS7 (6) cell lysate.

Please check the [product details page](#) for more images. Overall 6 images are available for ABIN969501.