

Datasheet for ABIN969503

anti-ASS1 antibody

5 Images

1 Publication

[Go to Product page](#)

Overview

Quantity:	0.1 mg
Target:	ASS1
Reactivity:	Human, Mouse, Monkey
Host:	Mouse
Clonality:	Monoclonal
Conjugate:	This ASS1 antibody is un-conjugated
Application:	Western Blotting (WB), ELISA, Immunohistochemistry (IHC)

Product Details

Immunogen:	Purified recombinant fragment of human ASS1 expressed in E. coli.
Clone:	2C10
Isotype:	IgG1
Purification:	purified

Target Details

Target:	ASS1
Alternative Name:	ASS1 (ASS1 Products)
Background:	Description: The protein encoded by this gene catalyzes the penultimate step of the arginine biosynthetic pathway. There are approximately 10 to 14 copies of this gene including the pseudogenes scattered across the human genome, among which the one located on chromosome 9 appears to be the only functional gene for argininosuccinate synthetase.

Target Details

Mutations in the chromosome 9 copy of ASS cause citrullinemia. Two transcript variants encoding the same protein have been found for this gene.

Aliases: ASS, CTLN1

Molecular Weight: 47 kDa

Gene ID: 445

HGNC: 445

Pathways: [Response to Growth Hormone Stimulus](#), [Cellular Response to Molecule of Bacterial Origin](#)

Application Details

Application Notes: ELISA: 1:10000, WB: 1:500 - 1:2000, IHC: 1:200 - 1:1000

Restrictions: For Research Use only

Handling

Format: Liquid

Buffer: Purified antibody in PBS with 0.05 % sodium azide

Preservative: Sodium azide

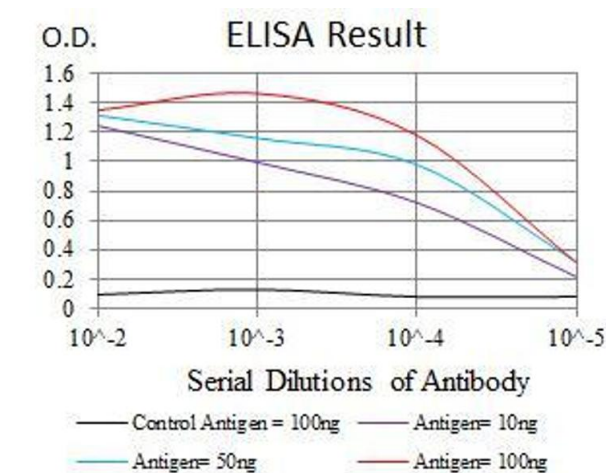
Precaution of Use: This product contains Sodium azide: a POISONOUS AND HAZARDOUS SUBSTANCE which should be handled by trained staff only.

Storage: 4 °C/-20 °C

Storage Comment: 4°C, -20°C for long term storage

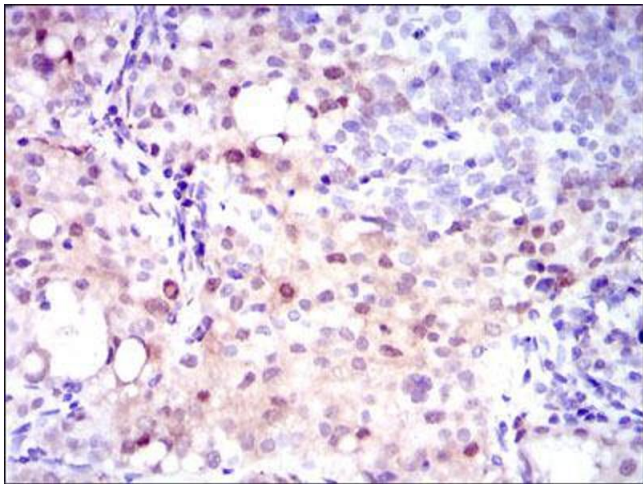
Publications

Product cited in: Li, Xia, Huang, Chen, Su, Li, Wang, Ding, Shao: "A strategy to rapidly identify the functional targets of microRNAs by combining bioinformatics and mRNA cytoplasmic/nucleic ratios in culture cells." in: **FEBS letters**, Vol. 584, Issue 14, pp. 3198-202, (2010) ([PubMed](#)).



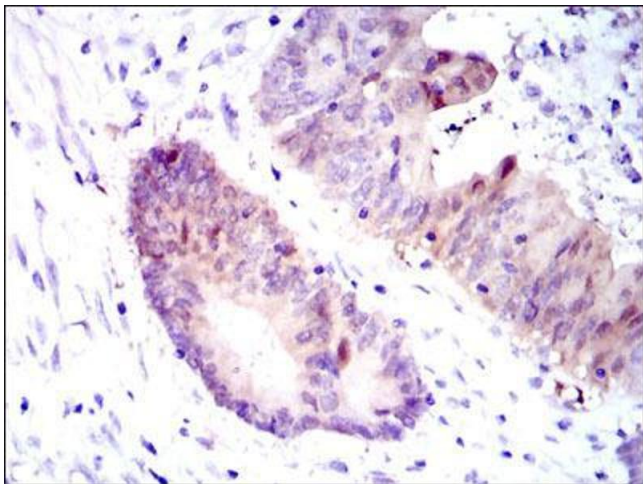
ELISA

Image 1. Black line: Control Antigen (100 ng), Purple line: Antigen(10 ng), Blue line: Antigen (50 ng), Red line: Antigen (100 ng),



Immunohistochemistry

Image 2. Immunohistochemical analysis of paraffin-embedded cervical cancer tissues using ASS1 mouse mAb with DAB staining.



Immunohistochemistry

Image 3. Immunohistochemical analysis of paraffin-embedded colon cancer tissues using ASS1 mouse mAb with DAB staining.

Please check the [product details page](#) for more images. Overall 5 images are available for ABIN969503.