

Datasheet for ABIN969505

anti-CCL2 antibody

7 Images

2 Publications

[Go to Product page](#)

Overview

Quantity:	0.1 mg
Target:	CCL2
Reactivity:	Human, Mouse, Monkey
Host:	Mouse
Clonality:	Monoclonal
Application:	Western Blotting (WB), Immunohistochemistry (IHC), ELISA, Immunocytochemistry (ICC), Flow Cytometry (FACS)

Product Details

Immunogen:	Purified recombinant fragment of human CCL2 expressed in E. coli.
Clone:	2D8
Isotype:	IgG1
Purification:	purified

Target Details

Target:	CCL2
Alternative Name:	CCL2 (CCL2 Products)
Background:	Description: This gene is one of several cytokine genes clustered on the q-arm of chromosome 17. Cytokines are a family of secreted proteins involved in immunoregulatory and inflammatory processes. The protein encoded by this gene is structurally related to the CXC subfamily of cytokines. Members of this subfamily are characterized by two cysteines separated by a single

Target Details

amino acid. This cytokine displays chemotactic activity for monocytes and basophils but not for neutrophils or eosinophils. It has been implicated in the pathogenesis of diseases characterized by monocytic infiltrates, like psoriasis, rheumatoid arthritis and atherosclerosis. It binds to chemokine receptors CCR2 and CCR4.

Aliases: HC11, MCAF, MCP1, MCP-1, SCYA2, GDCF-2, SMC-CF, HSMCR30

Molecular Weight: 11 kDa

Gene ID: 6347

HGNC: 6347

Pathways: [Cellular Response to Molecule of Bacterial Origin](#), [Positive Regulation of Immune Effector Process](#), [ER-Nucleus Signaling](#), [Unfolded Protein Response](#), [The Global Phosphorylation Landscape of SARS-CoV-2 Infection](#)

Application Details

Application Notes: ELISA: 1:10000, WB: 1:500 - 1:2000, IHC: 1:200 - 1:1000, ICC: 1:200 - 1:1000, FCM: 1:200 - 1:400

Restrictions: For Research Use only

Handling

Format: Liquid

Buffer: Purified antibody in PBS with 0.05 % sodium azide

Preservative: Sodium azide

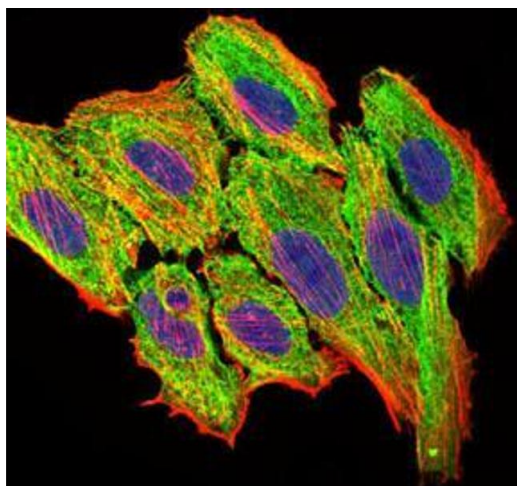
Precaution of Use: This product contains Sodium azide: a POISONOUS AND HAZARDOUS SUBSTANCE which should be handled by trained staff only.

Storage: 4 °C/-20 °C

Storage Comment: 4°C, -20°C for long term storage

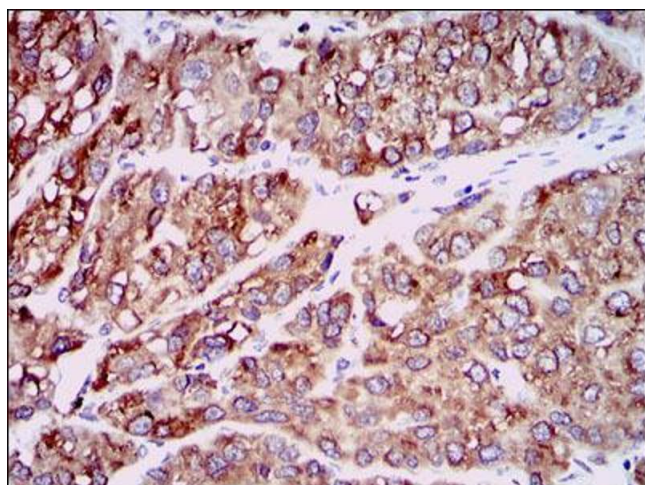
Publications

Product cited in: Trilck, Peter, Zheng, Frank, Dobrenis, Mascher, Rolfs, Frech: "Diversity of glycosphingolipid GM2 and cholesterol accumulation in NPC1 patient-specific iPSC-derived neurons." in: **Brain research**, Vol. 1657, pp. 52-61, (2016) ([PubMed](#)).



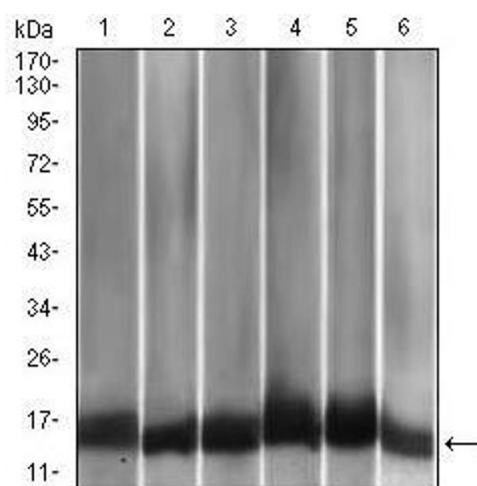
Immunofluorescence

Image 1. Immunofluorescence analysis of HepG2 cells using CCL2 mouse mAb (green). Blue: DRAQ5 fluorescent DNA dye. Red: Actin filaments have been labeled with Alexa Fluor-555 phalloidin.



Immunohistochemistry

Image 2. Immunohistochemical analysis of paraffin-embedded liver cancer tissues using CCL2 mouse mAb with DAB staining.



Western Blotting

Image 3. Western blot analysis using CCL2 mouse mAb against A549 (1), HeLa (2), Raw264.7 (3), L1210 (4), C6 (5), and COS-7 (6) cell lysate.

Please check the [product details page](#) for more images. Overall 7 images are available for ABIN969505.