

Datasheet for ABIN969508
anti-Cytokeratin 5 antibody

8 Images

2 Publications

[Go to Product page](#)

Overview

Quantity:	0.1 mg
Target:	Cytokeratin 5 (KRT5)
Reactivity:	Human, Mouse, Monkey
Host:	Mouse
Clonality:	Monoclonal
Conjugate:	This Cytokeratin 5 antibody is un-conjugated
Application:	Western Blotting (WB), Immunohistochemistry (IHC), ELISA, Flow Cytometry (FACS), Immunocytochemistry (ICC)

Product Details

Immunogen:	Purified recombinant fragment of human CK5 expressed in E. coli.
Clone:	2C2
Isotype:	IgG1
Purification:	purified

Target Details

Target:	Cytokeratin 5 (KRT5)
Alternative Name:	CK5 (KRT5 Products)
Background:	Description: The protein encoded by this gene is a member of the keratin gene family. The type II cytokeratins consist of basic or neutral proteins which are arranged in pairs of heterotypic keratin chains coexpressed during differentiation of simple and stratified epithelial tissues. This

Target Details

type II cytokeratin is specifically expressed in the basal layer of the epidermis with family member KRT14. Mutations in these genes have been associated with a complex of diseases termed epidermolysis bullosa simplex. The type II cytokeratins are clustered in a region of chromosome 12q12-q13.

Aliases: KRT5, K5, DDD, EBS2, KRT5A

Molecular Weight: 62.3 kDa

Gene ID: 3852

HGNC: 3852

Application Details

Application Notes: ELISA: 1:10000, WB: 1:500 - 1:2000, IHC: 1:200 - 1:1000, ICC: 1:200 - 1:1000, FCM: 1:200 - 1:400

Restrictions: For Research Use only

Handling

Format: Liquid

Buffer: Purified antibody in PBS with 0.05 % sodium azide

Preservative: Sodium azide

Precaution of Use: This product contains Sodium azide: a POISONOUS AND HAZARDOUS SUBSTANCE which should be handled by trained staff only.

Storage: 4 °C/-20 °C

Storage Comment: 4°C, -20°C for long term storage

Publications

Product cited in: Gertych, Oh, Wawrowsky, Weisenberger, Tajbakhsh: "3-D DNA methylation phenotypes correlate with cytotoxicity levels in prostate and liver cancer cell models." in: **BMC pharmacology & toxicology**, Vol. 14, pp. 11, (2013) ([PubMed](#)).

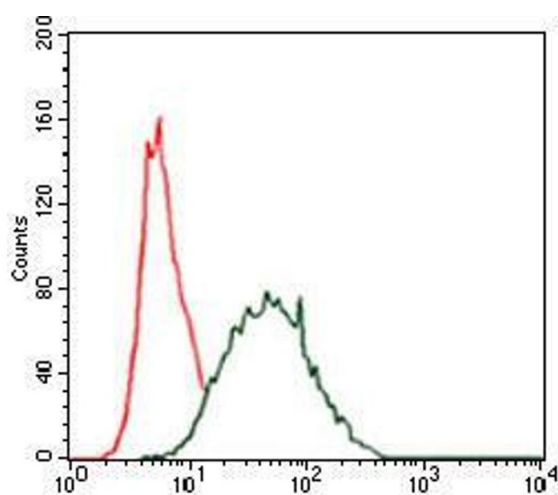
Tajbakhsh: "Covisualization of methylcytosine, global DNA, and protein biomarkers for In Situ 3D DNA methylation phenotyping of stem cells." in: **Methods in molecular biology (Clifton, N.J.)**, Vol. 1052, pp. 77-88, (2013) ([PubMed](#)).

Fukuda, Ichiyangi, Yamada, Go, Udono, Wada, Maeda, Soejima, Saitou, Ito, Sasaki: "Regional DNA methylation differences between humans and chimpanzees are associated with genetic changes, transcriptional divergence and disease genes." in: **Journal of human genetics**, Vol. 58, Issue 7, pp. 446-54, (2013) ([PubMed](#)).

Kurita, Arai, Nakamoto, Kato, Niwa: "Determination of DNA methylation using electrochemiluminescence with surface accumable coreactant." in: **Analytical chemistry**, Vol. 84, Issue 4, pp. 1799-803, (2012) ([PubMed](#)).

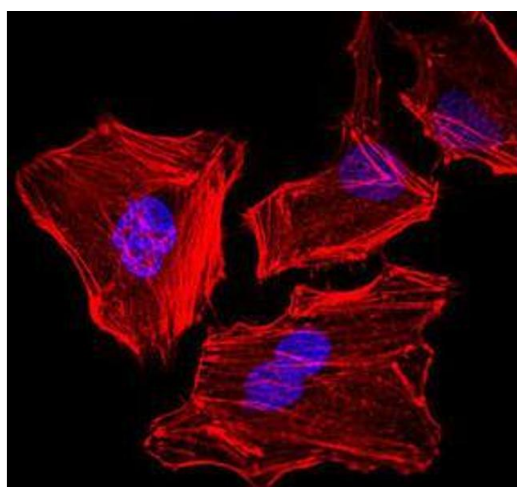
Kurita, Niwa: "DNA methylation analysis triggered by bulge specific immuno-recognition." in: **Analytical chemistry**, Vol. 84, Issue 17, pp. 7533-8, (2012) ([PubMed](#)).

Images



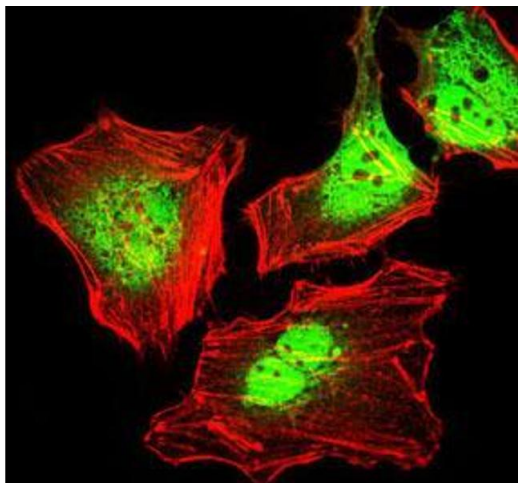
Flow Cytometry

Image 1. Flow cytometric analysis of HeLa cells using CK5 mouse mAb (green) and negative control (red).



Immunofluorescence

Image 2. Immunofluorescence analysis of HeLa cells. Blue: DRAQ5 fluorescent DNA dye. Red: Actin filaments have been labeled with Alexa Fluor-555 phalloidin.



Immunofluorescence

Image 3. Immunofluorescence analysis of HeLa cells using CK5 mouse mAb (green). Red: Actin filaments have been labeled with Alexa Fluor-555 phalloidin.

Please check the [product details page](#) for more images. Overall 8 images are available for ABIN969508.