

Datasheet for ABIN969509

anti-COTL1 antibody

6 Images

1 Publication

[Go to Product page](#)

Overview

Quantity:	0.1 mg
Target:	COTL1
Reactivity:	Human
Host:	Mouse
Clonality:	Monoclonal
Conjugate:	This COTL1 antibody is un-conjugated
Application:	Western Blotting (WB), Immunohistochemistry (IHC), ELISA

Product Details

Immunogen:	Purified recombinant fragment of human COTL1 expressed in E. coli.
Clone:	5C8
Isotype:	IgG1
Purification:	purified

Target Details

Target:	COTL1
Alternative Name:	COTL1 (COTL1 Products)
Background:	Description: This gene encodes one of the numerous actin-binding proteins which regulate the actin cytoskeleton. This protein binds F-actin, and also interacts with 5-lipoxygenase, which is the first committed enzyme in leukotriene biosynthesis. Although this gene has been reported to map to chromosome 17 in the Smith-Magenis syndrome region, the best alignments for this

Target Details

gene are to chromosome 16. The Smith-Magenis syndrome region is the site of two related pseudogenes.

Aliases: CLP

Molecular Weight: 16 kDa

Gene ID: 23406

HGNC: 23406

Application Details

Application Notes: ELISA: 1:10000, WB: 1:500 - 1:2000, IHC: 1:200 - 1:1000

Restrictions: For Research Use only

Handling

Format: Liquid

Buffer: Purified antibody in PBS with 0.05 % sodium azide

Preservative: Sodium azide

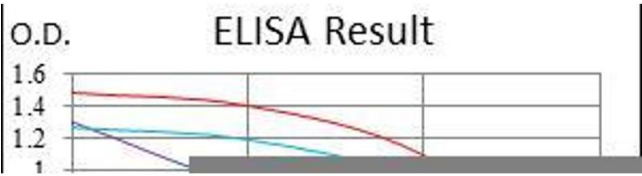
Precaution of Use: This product contains Sodium azide: a POISONOUS AND HAZARDOUS SUBSTANCE which should be handled by trained staff only.

Storage: 4 °C/-20 °C

Storage Comment: 4°C, -20°C for long term storage

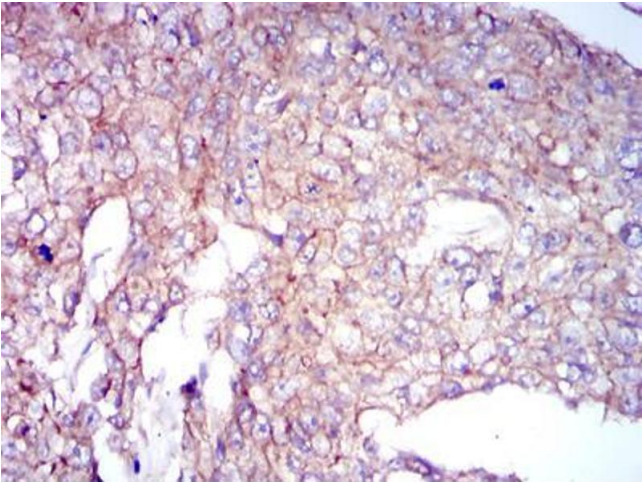
Publications

Product cited in: Jacques, Pereira, Maia, Cuzzi, Ramos-e-Silva: "Expression of cytokeratins 10, 13, 14 and 19 in oral lichen planus." in: **Journal of oral science**, Vol. 51, Issue 3, pp. 355-65, (2009) ([PubMed](#)).



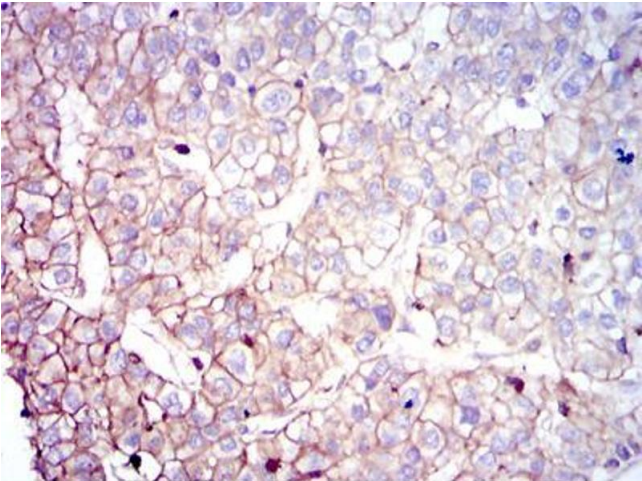
ELISA

Image 1. Figure 1: Red: Control Antigen (100 ng), Purple: Antigen (10ng), Green: Antigen (50 ng), Blue: Antigen (100 ng)



Immunohistochemistry

Image 2. Immunohistochemical analysis of paraffin-embedded breast cancer tissues using COTL1 mouse mAb with DAB staining.



Immunohistochemistry

Image 3. Immunohistochemical analysis of paraffin-embedded liver cancer tissues using COTL1 mouse mAb with DAB staining.

Please check the [product details page](#) for more images. Overall 6 images are available for ABIN969509.