

Datasheet for ABIN969510

anti-COTL1 antibody

4 Images

1 Publication

[Go to Product page](#)

Overview

Quantity:	100 µL
Target:	COTL1
Reactivity:	Human
Host:	Mouse
Clonality:	Monoclonal
Conjugate:	This COTL1 antibody is un-conjugated
Application:	ELISA, Flow Cytometry (FACS)

Product Details

Purpose:	COTL1 Antibody
Immunogen:	Purified recombinant fragment of human COTL1 expressed in E. Coli.
Clone:	5C8E3
Isotype:	IgG1
Purification:	Purified antibody

Target Details

Target:	COTL1
Alternative Name:	COTL1 (COTL1 Products)
Background:	Description: This gene encodes one of the numerous actin-binding proteins which regulate the actin cytoskeleton. This protein binds F-actin, and also interacts with 5-lipoxygenase, which is

Target Details

the first committed enzyme in leukotriene biosynthesis. Although this gene has been reported to map to chromosome 17 in the Smith-Magenis syndrome region, the best alignments for this gene are to chromosome 16. The Smith-Magenis syndrome region is the site of two related pseudogenes.

Aliases: CLP

Molecular Weight: 16kDa

Gene ID: 23406

HGNC: 23406

UniProt: [Q14019](#)

Application Details

Application Notes: ELISA: 1/10000
FCM: 1/200 - 1/400

Restrictions: For Research Use only

Handling

Format: Liquid

Buffer: Purified antibody in PBS with 0.05 % sodium azide.

Preservative: Sodium azide

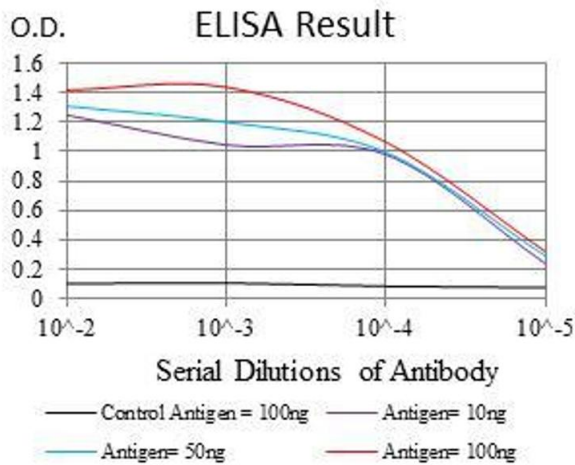
Precaution of Use: This product contains Sodium azide: a POISONOUS AND HAZARDOUS SUBSTANCE which should be handled by trained staff only.

Storage: 4 °C, -20 °C

Storage Comment: Store at 4°C short term. Aliquot and store at -20°C long term. Avoid freeze/thaw cycles.

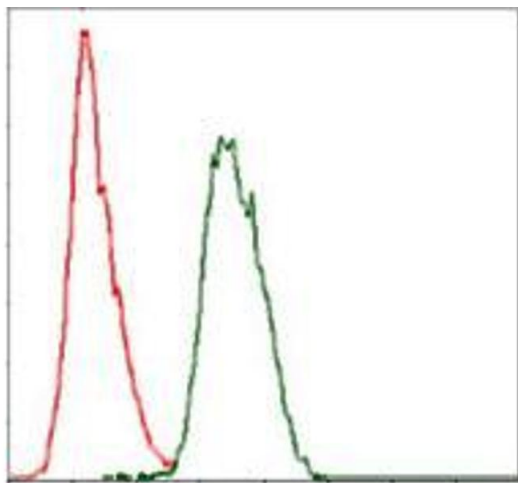
Publications

Product cited in: Jin, Shim, Kim, Chae, Chung: "Polymorphisms of COTL1 gene identified by proteomic approach and their association with autoimmune disorders." in: **Experimental & molecular medicine**, Vol. 41, Issue 5, pp. 354-61, (2009) ([PubMed](#)).



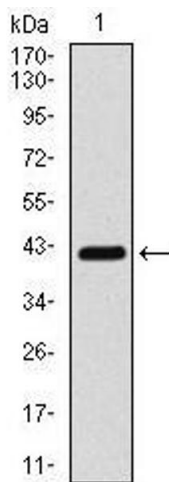
ELISA

Image 1. Black line: Control Antigen (100 ng), Purple line: Antigen(10 ng), Blue line: Antigen (50 ng), Red line: Antigen (100 ng),



Flow Cytometry

Image 2. Flow cytometric analysis of HeLa cells using CotL1 mouse mAb (green) and negative control (red).



Western Blotting

Image 3. Western blot analysis using CotL1 mAb against human CotL1 (AA: 1-142) recombinant protein. (Expected MW is 16 kDa)

Please check the [product details page](#) for more images. Overall 4 images are available for ABIN969510.