

## Datasheet for ABIN969511

**anti-CYP1A1 antibody**

4 Images

2 Publications

[Go to Product page](#)

## Overview

Quantity:	0.1 mg
Target:	CYP1A1
Reactivity:	Human
Host:	Mouse
Clonality:	Monoclonal
Conjugate:	This CYP1A1 antibody is un-conjugated
Application:	Western Blotting (WB), ELISA, Immunohistochemistry (IHC)

## Product Details

Immunogen:	Purified recombinant fragment of human CYP1A1 expressed in E. coli.
Clone:	6G5
Isotype:	IgG1
Purification:	purified

## Target Details

Target:	CYP1A1
Alternative Name:	CYP1A1 ( <a href="#">CYP1A1 Products</a> )
Background:	Description: This gene, CYP1A1, encodes a member of the cytochrome P450 superfamily of enzymes. The cytochrome P450 proteins are monooxygenases which catalyze many reactions involved in drug metabolism and synthesis of cholesterol, steroids and other lipids. This protein localizes to the endoplasmic reticulum and its expression is induced by some polycyclic

## Target Details

aromatic hydrocarbons (PAHs), some of which are found in cigarette smoke. The enzyme's endogenous substrate is unknown, however, it is able to metabolize some PAHs to carcinogenic intermediates. The gene has been associated with lung cancer risk. A related family member, CYP1A2, is located approximately 25 kb away from CYP1A1 on chromosome 15.

Aliases: AHH, AHRR, CP11, CYP1, P1-450, P450-C, P450DX

Molecular Weight: 58 kDa

Gene ID: 1543

HGNC: 1543

Pathways: [Steroid Hormone Biosynthesis](#), [Regulation of Lipid Metabolism by PPARalpha](#)

## Application Details

Application Notes: ELISA: 1:10000, WB: 1:500 - 1:2000, IHC: 1:200 - 1:1000

Restrictions: For Research Use only

## Handling

Format: Liquid

Buffer: Purified antibody in PBS with 0.05 % sodium azide

Preservative: Sodium azide

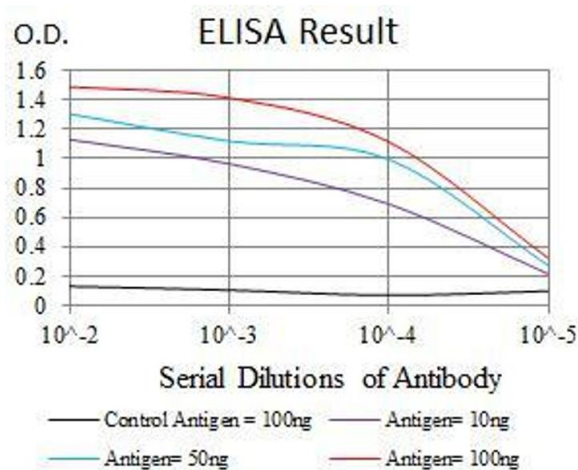
Precaution of Use: This product contains Sodium azide: a POISONOUS AND HAZARDOUS SUBSTANCE which should be handled by trained staff only.

Storage: 4 °C/-20 °C

Storage Comment: 4°C, -20°C for long term storage

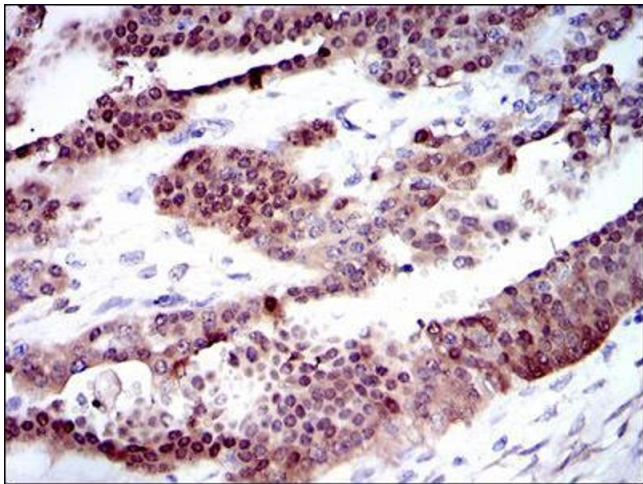
## Publications

Product cited in: Wang, Wu, Zhou, Guo, Zheng, Wang, Bi, Liu, Zhou, Guo, Sha: "Mapping of the N-linked glycoproteome of human spermatozoa." in: **Journal of proteome research**, Vol. 12, Issue 12, pp. 5750-9, (2013) ([PubMed](#)).



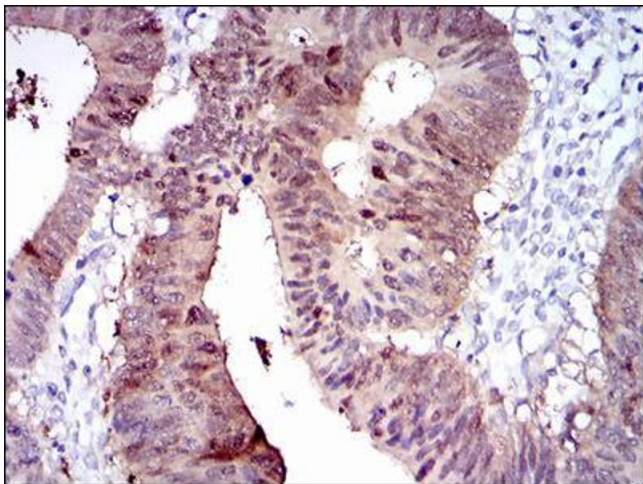
ELISA

**Image 1.** Black line: Control Antigen (100 ng), Purple line: Antigen(10 ng), Blue line: Antigen (50 ng), Red line: Antigen (100 ng),



Immunohistochemistry

**Image 2.** Immunohistochemical analysis of paraffin-embedded ovarian cancer tissues using CYP1A1 mouse mAb with DAB staining.



Immunohistochemistry

**Image 3.** Immunohistochemical analysis of paraffin-embedded rectum cancer tissues using CYP1A1 mouse mAb with DAB staining.

Please check the [product details page](#) for more images. Overall 4 images are available for ABIN969511.