



Datasheet for ABIN969516 **anti-E2F1 antibody (AA 69-223)**



[Go to Product page](#)

6 Images

4 Publications

Overview

Quantity:	0.1 mg
Target:	E2F1
Binding Specificity:	AA 69-223
Reactivity:	Human, Mouse
Host:	Mouse
Clonality:	Monoclonal
Application:	Western Blotting (WB), ELISA, Immunohistochemistry (IHC), Flow Cytometry (FACS)

Product Details

Immunogen:	Purified recombinant fragment of human E2F1 (AA: 69-223) expressed in E. coli. ,
Clone:	8G9
Isotype:	IgG1
Purification:	purified

Target Details

Target:	E2F1
Alternative Name:	E2F1 (E2F1 Products)
Background:	Description: The protein encoded by this gene is a member of the E2F family of transcription factors. The E2F family plays a crucial role in the control of cell cycle and action of tumor suppressor proteins and is also a target of the transforming proteins of small DNA tumor viruses. The E2F proteins contain several evolutionally conserved domains found in most

Target Details

members of the family. These domains include a DNA binding domain, a dimerization domain which determines interaction with the differentiation regulated transcription factor proteins (DP), a transactivation domain enriched in acidic amino acids, and a tumor suppressor protein association domain which is embedded within the transactivation domain. This protein and another 2 members, E2F2 and E2F3, have an additional cyclin binding domain. This protein binds preferentially to retinoblastoma protein pRB in a cell-cycle dependent manner. It can mediate both cell proliferation and p53-dependent/independent apoptosis.

Aliases: RBP3, E2F-1, RBAP1, RBBP3

Molecular Weight: 46.9 kDa

Gene ID: 1869

HGNC: 1869

Pathways: [p53 Signaling](#), [Cell Division Cycle](#), [Mitotic G1-G1/S Phases](#), [DNA Replication](#), [M Phase](#), [Autophagy](#)

Application Details

Application Notes: ELISA: 1:10000, WB: 1:500 - 1:2000, IHC: 1:200 - 1:1000, FCM: 1:200 - 1:400

Restrictions: For Research Use only

Handling

Format: Liquid

Buffer: Purified antibody in PBS with 0.05 % sodium azide

Preservative: Sodium azide

Precaution of Use: This product contains Sodium azide: a POISONOUS AND HAZARDOUS SUBSTANCE which should be handled by trained staff only.

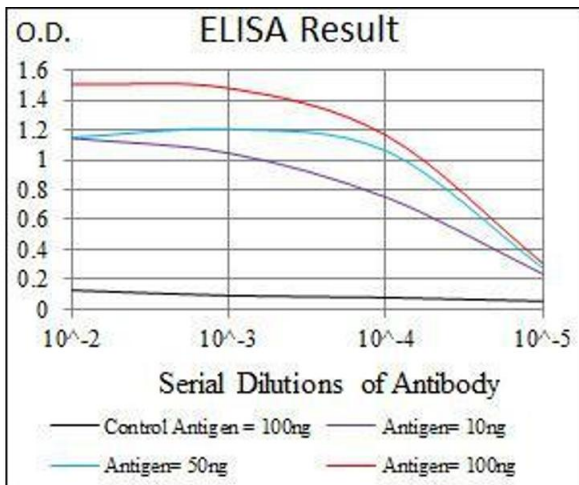
Storage: 4 °C/-20 °C

Storage Comment: 4°C, -20°C for long term storage

Publications

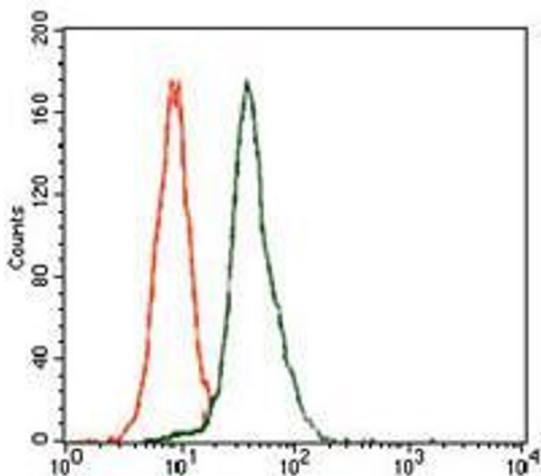
Product cited in: Koc, Cimen, Kumcuoglu, Abu, Akpınar, Haque, Spremulli, Koc: "Identification and characterization of CHCHD1, AURKAIP1, and CRIF1 as new members of the mammalian mitochondrial ribosome." in: **Frontiers in physiology**, Vol. 4, pp. 183, (2013) ([PubMed](#)).

Validation report #100203 for Western Blotting (WB)



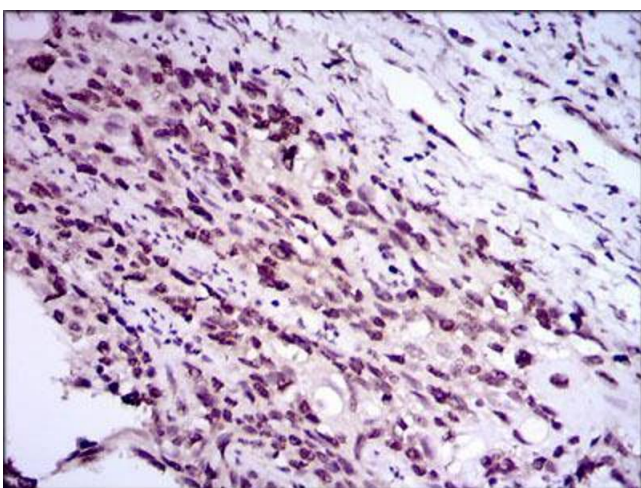
ELISA

Image 1. Black line: Control Antigen (100 ng), Purple line: Antigen(10 ng), Blue line: Antigen (50 ng), Red line: Antigen (100 ng),



Flow Cytometry

Image 2. Flow cytometric analysis of HeLa cells using E2F1 mouse mAb (green) and negative control (red).



Immunohistochemistry

Image 3. Immunohistochemical analysis of paraffin-embedded esophageal cancer tissues using E2F1 mouse mAb with DAB staining.

Please check the [product details page](#) for more images. Overall 6 images are available for ABIN969516.