



Datasheet for ABIN969531
anti-ITGB1 antibody



[Go to Product page](#)

6 Images

2 Publications

Overview

| | |
|--------------|---|
| Quantity: | 0.1 mg |
| Target: | ITGB1 |
| Reactivity: | Human, Monkey |
| Host: | Mouse |
| Clonality: | Monoclonal |
| Application: | Western Blotting (WB), Flow Cytometry (FACS), ELISA, Immunohistochemistry (IHC), DNA Microscopy (DNA Mic) |

Product Details

| | |
|---------------|--|
| Immunogen: | Purified recombinant fragment of human ITGB1 expressed in E. coli. |
| Clone: | 3B6 |
| Isotype: | IgG1 |
| Purification: | purified |

Target Details

| | |
|-------------------|---|
| Target: | ITGB1 |
| Alternative Name: | ITGB1 (ITGB1 Products) |
| Background: | Description: Integrins are heterodimeric proteins made up of alpha and beta subunits. At least 18 alpha and 8 beta subunits have been described in mammals. Integrin family members are membrane receptors involved in cell adhesion and recognition in a variety of processes including embryogenesis, hemostasis, tissue repair, immune response and metastatic diffusion |

Target Details

of tumor cells. This gene encodes a beta subunit. Multiple alternatively spliced transcript variants which encode different protein isoforms have been found for this gene.

Aliases: CD29, FNRR, MDF2, VLAB, GPIIA, MSK12, VLA-BETA

Molecular Weight: 88.4 kDa

Gene ID: 3688

HGNC: 3688

Pathways: [Cell-Cell Junction Organization](#), [Regulation of G-Protein Coupled Receptor Protein Signaling](#), [CXCR4-mediated Signaling Events](#), [Signaling of Hepatocyte Growth Factor Receptor](#), [Integrin Complex](#), [SARS-CoV-2 Protein Interactome](#)

Application Details

Application Notes: ELISA: 1:10000, WB: 1:500 - 1:2000, IHC: 1:200 - 1:1000, FCM: 1:200 - 1:400

Restrictions: For Research Use only

Handling

Format: Liquid

Buffer: Purified antibody in PBS with 0.05 % sodium azide

Preservative: Sodium azide

Precaution of Use: This product contains Sodium azide: a POISONOUS AND HAZARDOUS SUBSTANCE which should be handled by trained staff only.

Storage: 4 °C/-20 °C

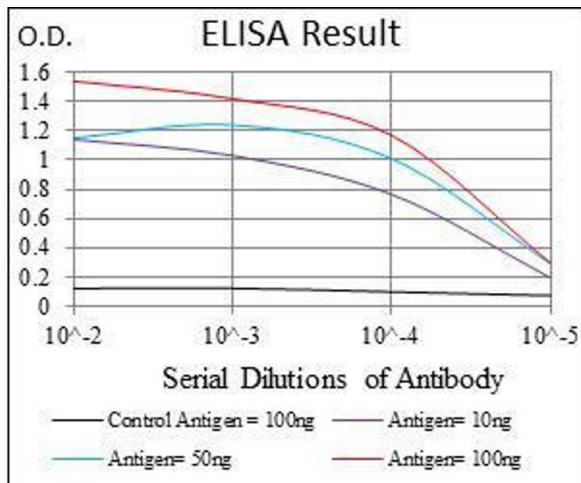
Storage Comment: 4°C, -20°C for long term storage

Publications

Product cited in: Toka, Dunaway, Smaltz, Szulc-Dąbrowska, Drnevich, Mielcarska, Bossowska-Nowicka, Schweizer: "Bacterial and viral pathogen-associated molecular patterns induce divergent early transcriptomic landscapes in a bovine macrophage cell line." in: **BMC genomics**, Vol. 20, Issue 1, pp. 15, (2019) ([PubMed](#)).

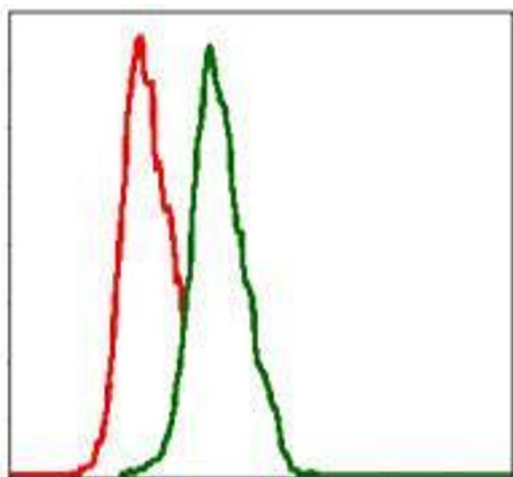
Murakami, Maeda, Yonezawa, Matsuki: "CC chemokine ligand 2 and CXC chemokine ligand 8 as neutrophil chemoattractant factors in canine idiopathic polyarthritis." in: **Veterinary**

Images



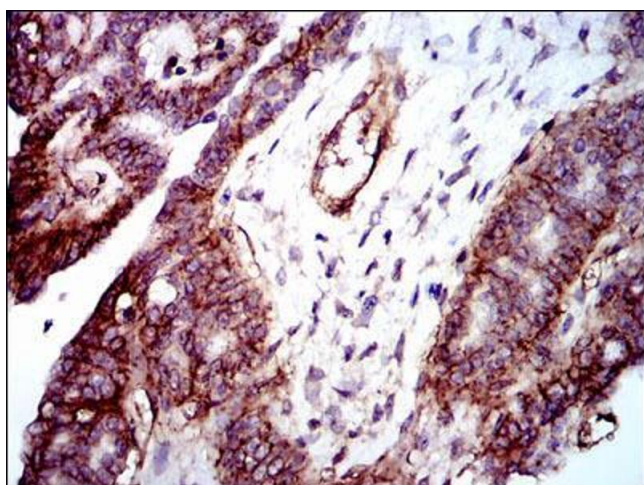
ELISA

Image 1. Black line: Control Antigen (100 ng), Purple line: Antigen(10 ng), Blue line: Antigen (50 ng), Red line: Antigen (100 ng),



Flow Cytometry

Image 2. Flow cytometric analysis of Hela cells using ITGB1 mouse mAb (green) and negative control (red).



Immunohistochemistry

Image 3. Immunohistochemical analysis of paraffin-embedded ovarian cancer tissues using ITGB1 mouse mAb with DAB staining.

Please check the [product details page](#) for more images. Overall 6 images are available for ABIN969531.