

Datasheet for ABIN969539

anti-MMP3 antibody

3 Images

2 Publications

[Go to Product page](#)

Overview

Quantity:	0.1 mg
Target:	MMP3
Reactivity:	Human
Host:	Mouse
Clonality:	Monoclonal
Conjugate:	This MMP3 antibody is un-conjugated
Application:	Western Blotting (WB), ELISA, Flow Cytometry (FACS)

Product Details

Immunogen:	Purified recombinant fragment of human MMP3 expressed in E. coli.
Clone:	4F10
Isotype:	IgG1
Purification:	purified

Target Details

Target:	MMP3
Alternative Name:	MMP3 (MMP3 Products)
Background:	Description: Proteins of the matrix metalloproteinase (MMP) family are involved in the breakdown of extracellular matrix in normal physiological processes, such as embryonic development, reproduction, and tissue remodeling, as well as in disease processes, such as arthritis and metastasis. Most MMP's are secreted as inactive proproteins which are activated

Target Details

when cleaved by extracellular proteinases. This gene encodes an enzyme which degrades fibronectin, laminin, collagens III, IV, IX, and X, and cartilage proteoglycans. The enzyme is thought to be involved in wound repair, progression of atherosclerosis, and tumor initiation. The gene is part of a cluster of MMP genes which localize to chromosome 11q22.3.

Aliases: SL-1, STMY, STR1, CHDS6, MMP-3, STMY1

Molecular Weight: 54 kDa

Gene ID: 4314

HGNC: 4314

Application Details

Application Notes: ELISA: 1:10000, WB: 1:500 - 1:2000, FCM: 1:200 - 1:400

Restrictions: For Research Use only

Handling

Format: Liquid

Buffer: Purified antibody in PBS with 0.05 % sodium azide

Preservative: Sodium azide

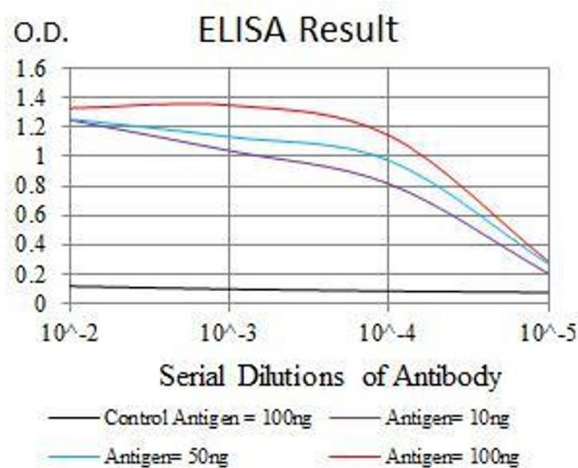
Precaution of Use: This product contains Sodium azide: a POISONOUS AND HAZARDOUS SUBSTANCE which should be handled by trained staff only.

Storage: 4 °C/-20 °C

Storage Comment: 4°C, -20°C for long term storage

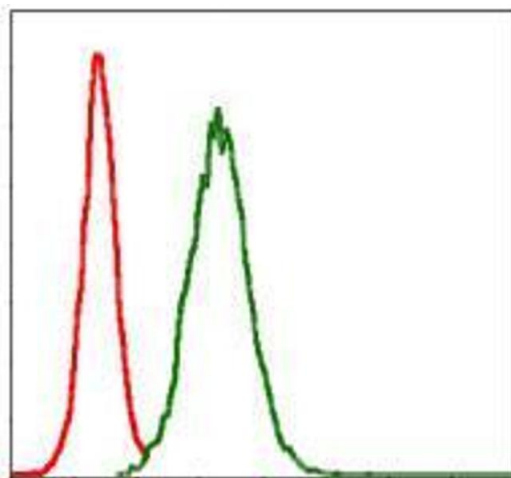
Publications

Product cited in: Wang, Wu, Zhou, Guo, Zheng, Wang, Bi, Liu, Zhou, Guo, Sha: "Mapping of the N-linked glycoproteome of human spermatozoa." in: **Journal of proteome research**, Vol. 12, Issue 12, pp. 5750-9, (2013) ([PubMed](#)).



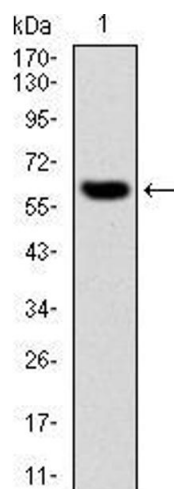
ELISA

Image 1. Black line: Control Antigen (100 ng), Purple line: Antigen(10 ng), Blue line: Antigen (50 ng), Red line: Antigen (100 ng),



Flow Cytometry

Image 2. Flow cytometric analysis of NIH/3T3 cells using MMP3 mouse mAb (green) and negative control (red).



Western Blotting

Image 3. Western blot analysis using MMP3 mAb against human MMP3 (AA: 189-441) recombinant protein. (Expected MW is 54 kDa)