

Datasheet for ABIN969547
anti-NEDD8 antibody



[Go to Product page](#)

6 Images

1 Publication

Overview

Quantity:	100 µL
Target:	NEDD8
Reactivity:	Human
Host:	Mouse
Clonality:	Monoclonal
Conjugate:	This NEDD8 antibody is un-conjugated
Application:	Western Blotting (WB), Immunohistochemistry (IHC), ELISA, Flow Cytometry (FACS), Immunocytochemistry (ICC)

Product Details

Purpose:	NEDD8 Antibody
Immunogen:	Purified recombinant fragment of human NEDD8 expressed in E. Coli.
Clone:	5B8
Isotype:	IgG1
Purification:	Purified antibody

Target Details

Target:	NEDD8
Alternative Name:	NEDD8 (NEDD8 Products)
Background:	Description: Ubiquitin-like protein which plays an important role in cell cycle control and

Target Details

embryogenesis. Covalent attachment to its substrates requires prior activation by the E1 complex UBE1C-APPBP1 and linkage to the E2 enzyme UBE2M. Attachment of NEDD8 to cullins activates their associated E3 ubiquitin ligase activity, and thus promotes polyubiquitination and proteasomal degradation of cyclins and other regulatory proteins. Tissue specificity: Highly expressed in heart, skeletal muscle, spleen, thymus, prostate, testis, ovary, colon and leukocytes.

Aliases: NEDD-8

Molecular Weight: 9kDa

Gene ID: 4738

HGNC: 4738

UniProt: [Q15843](#)

Pathways: [Ubiquitin Proteasome Pathway](#)

Application Details

Application Notes: ELISA: 1/10000
FCM: 1/200 - 1/400
ICC: 1/200 - 1/1000

Restrictions: For Research Use only

Handling

Format: Liquid

Buffer: Purified antibody in PBS with 0.05 % sodium azide.

Preservative: Sodium azide

Precaution of Use: This product contains Sodium azide: a POISONOUS AND HAZARDOUS SUBSTANCE which should be handled by trained staff only.

Storage: 4 °C, -20 °C

Storage Comment: Store at 4°C short term. Aliquot and store at -20°C long term. Avoid freeze/thaw cycles.

Publications

Product cited in: Ohki, Funatsu, Konishi, Chiba: "The mechanism of poly-NEDD8 chain formation in vitro." in: **Biochemical and biophysical research communications**, Vol. 381, Issue 3, pp. 443-7, (2009) (

Images

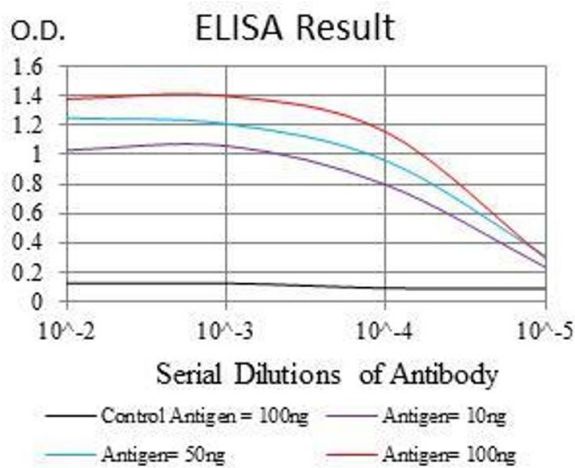
**ELISA**

Image 1. Black line: Control Antigen (100 ng), Purple line: Antigen(10 ng), Blue line: Antigen (50 ng), Red line: Antigen (100 ng),

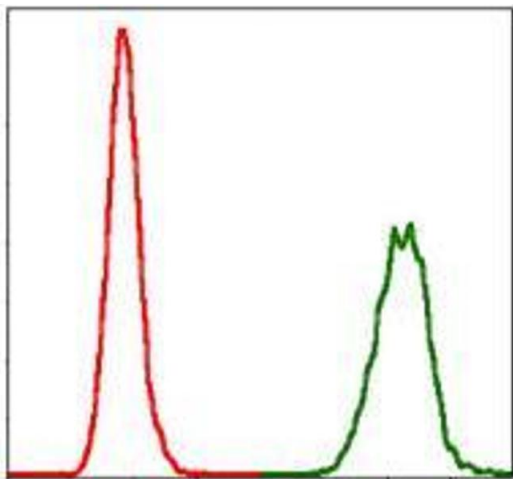
**Flow Cytometry**

Image 2. Flow cytometric analysis of HeLa cells using NEDD8 mouse mAb (green) and negative control (red).

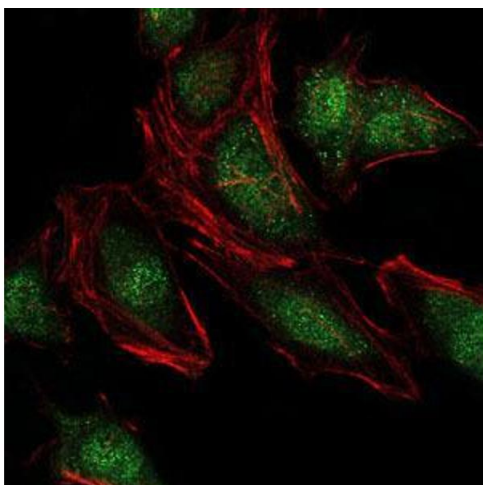
**Immunofluorescence**

Image 3. Immunofluorescence analysis of HeLa cells using NEDD8 mouse mAb (green). Red: Actin filaments have been labeled with Alexa Fluor-555 phalloidin.

Please check the [product details page](#) for more images. Overall 6 images are available for ABIN969547.