

Datasheet for ABIN969556
anti-PPM1A antibody (AA 202-382)

5 Images

2 Publications

[Go to Product page](#)

Overview

Quantity:	0.1 mg
Target:	PPM1A
Binding Specificity:	AA 202-382
Reactivity:	Human, Monkey
Host:	Mouse
Clonality:	Monoclonal
Conjugate:	This PPM1A antibody is un-conjugated
Application:	Western Blotting (WB), ELISA, Flow Cytometry (FACS)

Product Details

Immunogen:	Purified recombinant fragment of human PPM1A (AA: 202-382) expressed in E. coli. ,
Clone:	7F12
Isotype:	IgG1
Purification:	purified

Target Details

Target:	PPM1A
Alternative Name:	PPM1A (PPM1A Products)
Background:	Description: The protein encoded by this gene is a member of the PP2C family of Ser/Thr protein phosphatases. PP2C family members are known to be negative regulators of cell stress

Target Details

response pathways. This phosphatase dephosphorylates, and negatively regulates the activities of, MAP kinases and MAP kinase kinases. It has been shown to inhibit the activation of p38 and JNK kinase cascades induced by environmental stresses. This phosphatase can also dephosphorylate cyclin-dependent kinases, and thus may be involved in cell cycle control. Overexpression of this phosphatase is reported to activate the expression of the tumor suppressor gene TP53/p53, which leads to G2/M cell cycle arrest and apoptosis. Three alternatively spliced transcript variants encoding distinct isoforms have been described.

Aliases: PP2CA, PP2Calpha, PP2C-ALPHA

Molecular Weight:	42.4 kDa
-------------------	----------

Gene ID:	5494
----------	------

HGNC:	5494
-------	------

Application Details

Application Notes:	ELISA: 1:10000, WB: 1:500 - 1:2000, FCM: 1:200 - 1:400
--------------------	--

Restrictions:	For Research Use only
---------------	-----------------------

Handling

Format:	Liquid
---------	--------

Buffer:	Purified antibody in PBS with 0.05 % sodium azide
---------	---

Preservative:	Sodium azide
---------------	--------------

Precaution of Use:	This product contains Sodium azide: a POISONOUS AND HAZARDOUS SUBSTANCE which should be handled by trained staff only.
--------------------	--

Storage:	4 °C/-20 °C
----------	-------------

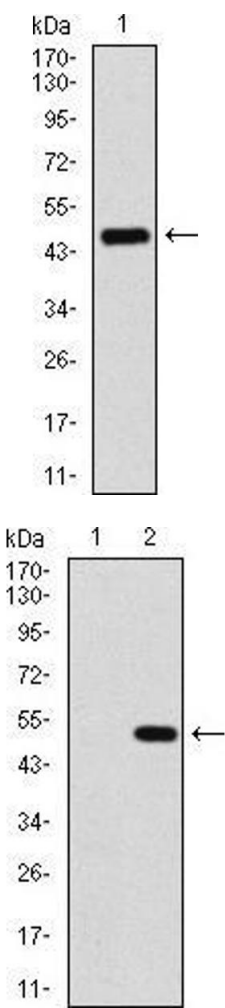
Storage Comment:	4°C, -20°C for long term storage
------------------	----------------------------------

Publications

Product cited in:	Malki, Uher, Paya-Cano, Binder, Rietschel, Zobel, Mors, Hauser, Henigsberg, Jerman, Souery, Placentino, Ng, Cohen-Woods, Sluyter, Farmer, Aitchison, Craig, Lewis, McGuffin, Schalkwyk: "Convergent animal and human evidence suggests a role of PPM1A gene in response to antidepressants." in: Biological psychiatry , Vol. 69, Issue 4, pp. 360-5, (2011) (PubMed).
-------------------	---

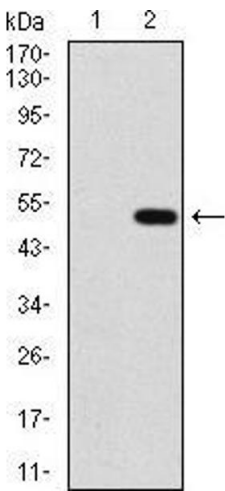
Sun, Yu, Dotti, Shen, Tan, Savoldo, Pass, Chu, Zhang, Lu, Fu, Lin, Yang: "PPM1A and PPM1B act as IKKbeta phosphatases to terminate TNFalpha-induced IKKbeta-NF-kappaB activation." in: **Cellular signalling**, Vol. 21, Issue 1, pp. 95-102, (2008) ([PubMed](#)).

Images



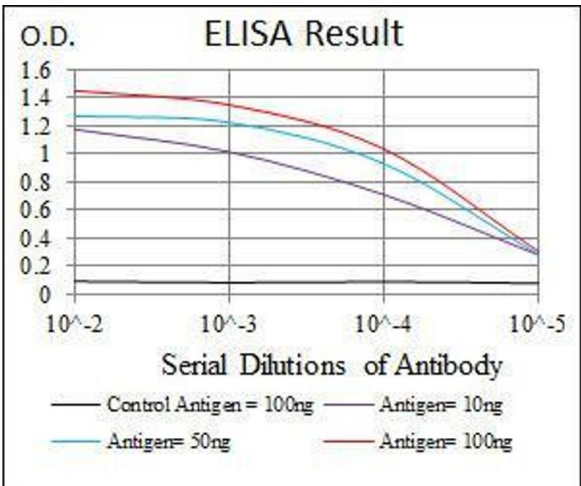
Western Blotting

Image 1. Western blot analysis using PPM1A mAb against human PPM1A recombinant protein. (Expected MW is 45.9 kDa)



Western Blotting

Image 2. Western blot analysis using PPM1A mAb against HEK293 (1) and PPM1A (AA: 202-382)-hlgGfc transfected HEK293 (2) cell lysate.



ELISA

Image 3. Black line: Control Antigen (100 ng), Purple line: Antigen(10 ng), Blue line: Antigen (50 ng), Red line: Antigen (100 ng),

Images

Please check the [product details page](#) for more images. Overall 5 images are available for ABIN969556.