

Datasheet for ABIN969558

anti-Rab4 antibody

6 Images

1 Publication

[Go to Product page](#)

Overview

Quantity:	0.1 mg
Target:	Rab4 (RAB4A)
Reactivity:	Human, Mouse, Monkey
Host:	Mouse
Clonality:	Monoclonal
Application:	Western Blotting (WB), Immunohistochemistry (IHC), ELISA, Flow Cytometry (FACS)

Product Details

Immunogen:	Purified recombinant fragment of human RAB4A expressed in E. coli.
Clone:	4-00E-11
Isotype:	IgG1
Purification:	purified

Target Details

Target:	Rab4 (RAB4A)
Alternative Name:	RAB4A (RAB4A Products)
Background:	<p>Description: The protein encoded by this gene belongs to the rab family. Rab4A protein is involved in the regulation of procathepsin L secretion, it was either inhibited by expression of a Rab4A dominant-negative mutant or increased by overexpression of the wild-type Rab4A in human melanoma cells.</p> <p>Aliases: RAB4, HRES-1/RAB4</p>

Target Details

Molecular Weight: 23.8 kDa

Gene ID: 5867

HGNC: 5867

Application Details

Application Notes: ELISA: 1:10000, WB: 1:500 - 1:2000, IHC: 1:200 - 1:1000, FCM: 1:200 - 1:400

Restrictions: For Research Use only

Handling

Format: Liquid

Buffer: Purified antibody in PBS with 0.05 % sodium azide

Preservative: Sodium azide

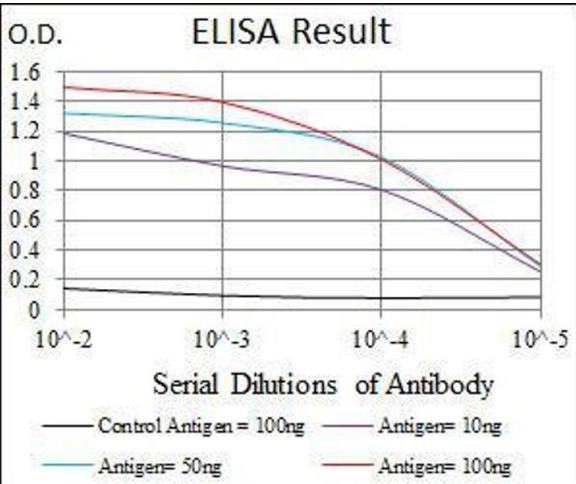
Precaution of Use: This product contains Sodium azide: a POISONOUS AND HAZARDOUS SUBSTANCE which should be handled by trained staff only.

Storage: 4 °C/-20 °C

Storage Comment: 4°C, -20°C for long term storage

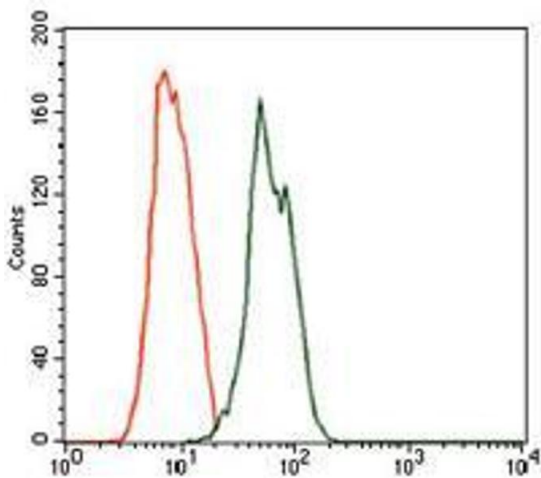
Publications

Product cited in: Trilck, Peter, Zheng, Frank, Dobrenis, Mascher, Rolfs, Frech: "Diversity of glycosphingolipid GM2 and cholesterol accumulation in NPC1 patient-specific iPSC-derived neurons." in: **Brain research**, Vol. 1657, pp. 52-61, (2016) ([PubMed](#)).



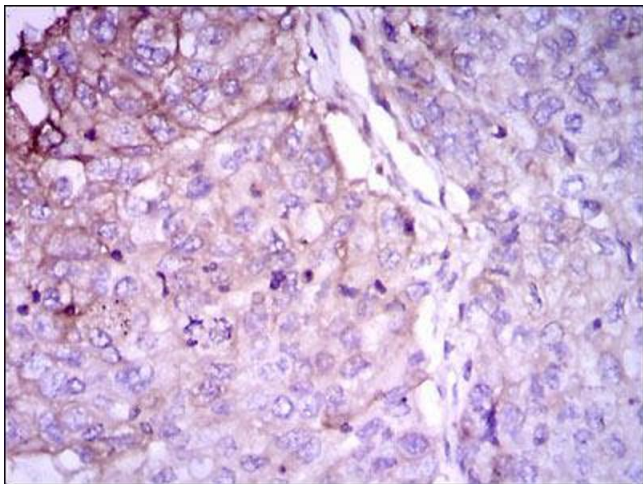
ELISA

Image 1. Black line: Control Antigen (100 ng), Purple line: Antigen(10 ng), Blue line: Antigen (50 ng), Red line: Antigen (100 ng),



Flow Cytometry

Image 2. Flow cytometric analysis of MCF-7 cells using RAB4A mouse mAb (green) and negative control (red).



Immunohistochemistry

Image 3. Immunohistochemical analysis of paraffin-embedded lung cancer tissues using RAB4A mouse mAb with DAB staining.

Please check the [product details page](#) for more images. Overall 6 images are available for ABIN969558.