

Datasheet for ABIN969567

**anti-Sonic Hedgehog antibody (AA 26-161)**

6 Images

1 Publication

[Go to Product page](#)

## Overview

Quantity:	0.1 mg
Target:	Sonic Hedgehog (SHH)
Binding Specificity:	AA 26-161
Reactivity:	Human, Mouse, Monkey
Host:	Mouse
Clonality:	Monoclonal
Application:	Western Blotting (WB), Immunohistochemistry (IHC), ELISA, Flow Cytometry (FACS)

## Product Details

Immunogen:	Purified recombinant fragment of human SHH (AA: 26-161) expressed in E. coli. ,
Clone:	5H4
Isotype:	IgG1
Purification:	purified

## Target Details

Target:	Sonic Hedgehog (SHH)
Alternative Name:	SHH ( <a href="#">SHH Products</a> )
Background:	Description: This gene encodes a protein that is instrumental in patterning the early embryo. It has been implicated as the key inductive signal in patterning of the ventral neural tube, the anterior-posterior limb axis, and the ventral somites. Of three human proteins showing sequence and functional similarity to the sonic hedgehog protein of Drosophila, this protein is

## Target Details

the most similar. The protein is made as a precursor that is autocatalytically cleaved, the N-terminal portion is soluble and contains the signalling activity while the C-terminal portion is involved in precursor processing. More importantly, the C-terminal product covalently attaches a cholesterol moiety to the N-terminal product, restricting the N-terminal product to the cell surface and preventing it from freely diffusing throughout the developing embryo. Defects in this protein or in its signalling pathway are a cause of holoprosencephaly (HPE), a disorder in which the developing forebrain fails to correctly separate into right and left hemispheres. HPE is manifested by facial deformities. It is also thought that mutations in this gene or in its signalling pathway may be responsible for VACTERL syndrome, which is characterized by vertebral defects, anal atresia, tracheoesophageal fistula with esophageal atresia, radial and renal dysplasia, cardiac anomalies, and limb abnormalities. Additionally, mutations in a long range enhancer located approximately 1 megabase upstream of this gene disrupt limb patterning and can result in preaxial polydactyly.

Aliases: TPT, HHG1, HLP3, HPE3, SMMCI, TPTPS, MCOPCB5

Molecular Weight: 49.6 kDa

Gene ID: 6469

HGNC: 6469

Pathways: [Hedgehog Signaling](#), [Dopaminergic Neurogenesis](#), [Regulation of Muscle Cell Differentiation](#), [Tube Formation](#), [Skeletal Muscle Fiber Development](#)

## Application Details

Application Notes: ELISA: 1:10000, WB: 1:500 - 1:2000, IHC: 1:200 - 1:1000, FCM: 1:200 - 1:400

Restrictions: For Research Use only

## Handling

Format: Liquid

Buffer: Purified antibody in PBS with 0.05 % sodium azide

Preservative: Sodium azide

Precaution of Use: This product contains Sodium azide: a POISONOUS AND HAZARDOUS SUBSTANCE which should be handled by trained staff only.

Storage: 4 °C/-20 °C

Handling

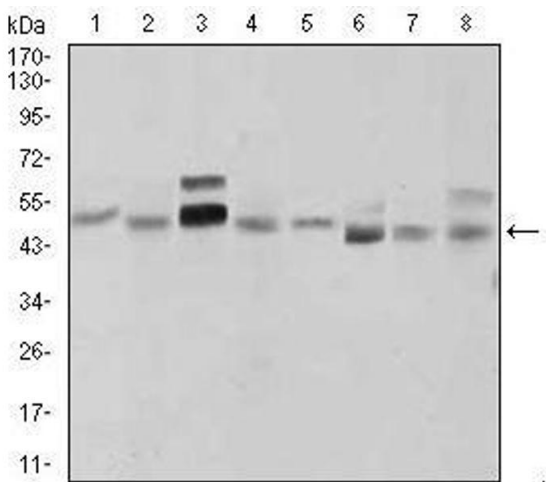
Storage Comment: 4°C, -20°C for long term storage

Publications

Product cited in: Toka, Dunaway, Smaltz, Szulc-Dąbrowska, Drnevich, Mielcarska, Bossowska-Nowicka, Schweizer: "Bacterial and viral pathogen-associated molecular patterns induce divergent early transcriptomic landscapes in a bovine macrophage cell line." in: **BMC genomics**, Vol. 20, Issue 1, pp. 15, (2019) ([PubMed](#)).

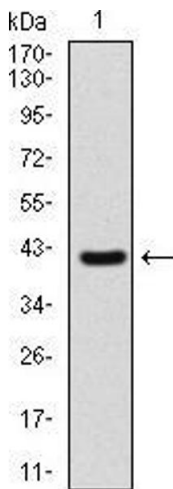
Murakami, Maeda, Yonezawa, Matsuki: "CC chemokine ligand 2 and CXC chemokine ligand 8 as neutrophil chemoattractant factors in canine idiopathic polyarthritis." in: **Veterinary immunology and immunopathology**, Vol. 182, pp. 52-58, (2016) ([PubMed](#)).

Images



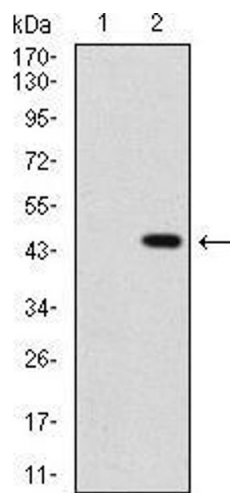
**Western Blotting**

**Image 1.** Western blot analysis using SHH mouse mAb against LNCaP (1), HepG2 (2), PANC-1 (3), HeLa (4), SK-N-SH (5), F9 (6), NIH3T3 (7), and COS7 (8) cell lysate.



**Western Blotting**

**Image 2.** Western blot analysis using SHH mAb against human SHH recombinant protein. (Expected MW is 41 kDa)



Western Blotting

**Image 3.** Western blot analysis using SHH mAb against HEK293 (1) and SHH (AA: 26-161)-hIgGFc transfected HEK293 (2) cell lysate.

Please check the [product details page](#) for more images. Overall 6 images are available for ABIN969567.