

Datasheet for ABIN969574

**anti-YAP1 antibody**

6 Images

2 Publications

[Go to Product page](#)

## Overview

Quantity:	0.1 mg
Target:	YAP1
Reactivity:	Human
Host:	Mouse
Clonality:	Monoclonal
Conjugate:	This YAP1 antibody is un-conjugated
Application:	Western Blotting (WB), ELISA, Immunohistochemistry (IHC), Flow Cytometry (FACS)

## Product Details

Immunogen:	Purified recombinant fragment of human YAP1 expressed in E. coli.
Clone:	1A12
Isotype:	IgG1
Purification:	purified

## Target Details

Target:	YAP1
Alternative Name:	YAP1 ( <a href="#">YAP1 Products</a> )
Background:	Description: This gene encodes the human ortholog of chicken YAP protein which binds to the SH3 domain of the Yes proto-oncogene product. This protein contains a WW domain that is found in various structural, regulatory and signaling molecules in yeast, nematode, and mammals, and may be involved in protein-protein interaction.

## Target Details

	Aliases: YAP, YKI, YAP2, YAP65
Gene ID:	10413
HGNC:	10413
Pathways:	<a href="#">MAPK Signaling</a> , <a href="#">Stem Cell Maintenance</a> , <a href="#">Regulation of Lipid Metabolism by PPARalpha</a>

## Application Details

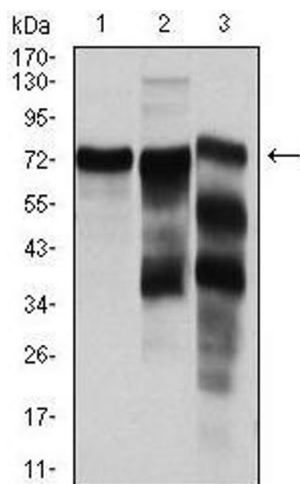
Application Notes:	ELISA: 1:10000, WB: 1:500 - 1:2000, IHC: 1:200 - 1:1000, FCM: 1:200 - 1:400
Restrictions:	For Research Use only

## Handling

Format:	Liquid
Buffer:	Purified antibody in PBS with 0.05 % sodium azide
Preservative:	Sodium azide
Precaution of Use:	This product contains Sodium azide: a POISONOUS AND HAZARDOUS SUBSTANCE which should be handled by trained staff only.
Storage:	4 °C/-20 °C
Storage Comment:	4°C, -20°C for long term storage

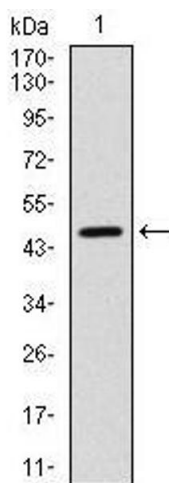
## Publications

Product cited in:	Wang, Wu, Zhou, Guo, Zheng, Wang, Bi, Liu, Zhou, Guo, Sha: "Mapping of the N-linked glycoproteome of human spermatozoa." in: <b>Journal of proteome research</b> , Vol. 12, Issue 12, pp. 5750-9, (2013) ( <a href="#">PubMed</a> ).
-------------------	--



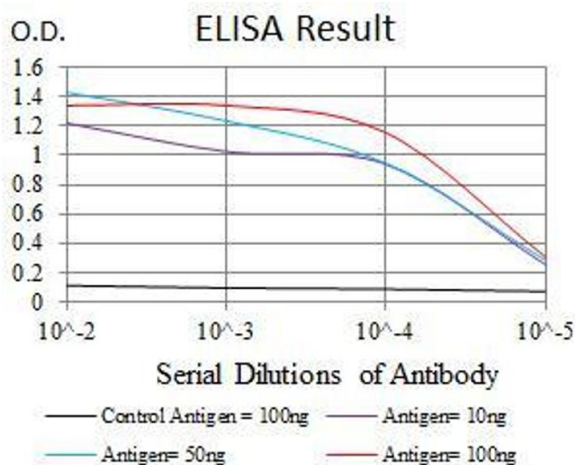
#### Western Blotting

**Image 1.** Western blot analysis using YAP1 mouse mAb against HeLa (1), C6 (2) and Cos7 (3) cell lysate.



#### Western Blotting

**Image 2.** Western blot analysis using YAP1 mAb against human YAP1 (AA: 250-447) recombinant protein. (Expected MW is 54.4 kDa)



#### ELISA

**Image 3.** Black line: Control Antigen (100 ng), Purple line: Antigen(10 ng), Blue line: Antigen (50 ng), Red line: Antigen (100 ng),

Please check the [product details page](#) for more images. Overall 6 images are available for ABIN969574.