



[Go to Product page](#)

Datasheet for ABIN97919

anti-Cyanine antibody (Alkaline Phosphatase (AP))

1 Image

Overview

Quantity:	1 mg
Target:	Cyanine
Reactivity:	Please inquire
Host:	Sheep
Clonality:	Polyclonal
Conjugate:	This Cyanine antibody is conjugated to Alkaline Phosphatase (AP)
Application:	ELISA

Product Details

Immunogen:	A mixture of Cy3 and Cy5 conjugated KLH
Isotype:	IgG
Characteristics:	Concentration Definition: by UV absorbance at 280 nm

Target Details

Target:	Cyanine
Abstract:	Cyanine Products
Target Type:	Chemical
Background:	Synonyms: ALP, Alk Phos

Application Details

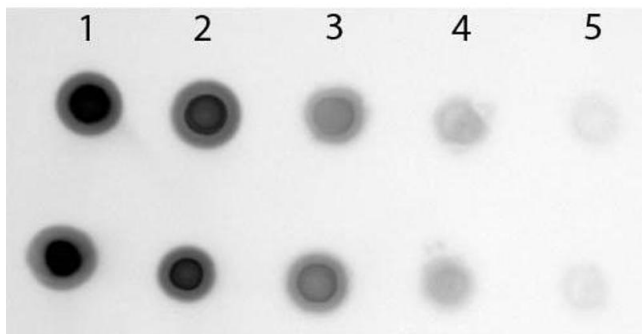
Application Notes: This product has been assayed against 1.0 ug of Cyanine IgG in a standard capture ELISA using pNPP p-nitrophenyl phosphate as a substrate for 30 minutes at room temperature. A working dilution of 1:700 to 1:2,800 of the reconstitution concentration is suggested for this product.

Restrictions: For Research Use only

Handling

Format:	Liquid
Concentration:	1.4 mg/mL
Buffer:	0.05 M Tris Chloride, 0.15 M Sodium Chloride, 0.005 M Magnesium Chloride, 0.0005 M Zinc Chloride, 50 % (v/v) Glycerol, pH 8.0
Preservative:	Sodium azide
Precaution of Use:	This product contains sodium azide: a POISONOUS AND HAZARDOUS SUBSTANCE which should be handled by trained staff only.
Storage:	4 °C

Images



Dot Blot

Image 1. Dot Blot of Sheep anti-Cyanine Antibody Alkaline Phosphatase Conjugated. Antigen: Row 1 - Cy3 Streptavidin Conjugated Row 2 - Cy5 Streptavidin Conjugated. Load: Lane 1 - 200 ng Lane 2 - 66.67 ng Lane 3 - 22.22 ng Lane 4 - 7.41 ng Lane 5 - 2.47 ng. Primary antibody: none. Secondary antibody: Sheep anti-Cyanine Antibody Alkaline Phosphatase Conjugated at 1:1,000 for 60 min at RT. Block: ABIN925618 for 1 HR at RT. Visualized using NBT-100 Alkaline Phosphatase Substrate for 30 seconds at RT.