



[Go to Product page](#)

Datasheet for ABIN98392
anti-Dextranase antibody

1 Image

Overview

Quantity:	2 mL
Target:	Dextranase
Reactivity:	Penicillium sp.
Host:	Rabbit
Clonality:	Polyclonal
Conjugate:	This Dextranase antibody is un-conjugated
Application:	ELISA

Product Details

Immunogen:	Dextranase [Penicillium species] Immunogentype:Native
Characteristics:	Concentration Definition: by Refractometry

Target Details

Target:	Dextranase
Abstract:	Dextranase Products
Background:	Synonyms: Dextranase Alpha-1,6-glucan-6-glucanohydrolase DEX
UniProt:	P48845

Application Details

Application Notes: This product has been assayed against 1.0 µg of Dextranase [Penicillium species] in a standard sandwich ELISA using Peroxidase conjugated Affinity Purified anti-Rabbit IgG [H&L] Goat) and (ABTS (2,2'-azino-bis-[3-ethyl-benthiazoline-6-sulfonic acid]) as a substrate for 30 minutes at room temperature. A working dilution of 1:2,000 to 1:10,000 of the reconstitution concentration is suggested for this product.

Restrictions: For Research Use only

Handling

Format: Lyophilized

Reconstitution: Restore with deionized water (or equivalent)

Concentration: 90 mg/mL

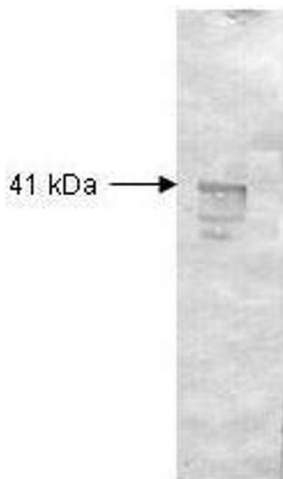
Buffer: 0.02 M Potassium Phosphate, 0.15 M Sodium Chloride, pH 7.2

Preservative: Sodium azide

Precaution of Use: This product contains sodium azide: a POISONOUS AND HAZARDOUS SUBSTANCE which should be handled by trained staff only.

Storage: 4 °C

Images



Western Blotting

Image 1. Both the antiserum and IgG fractions of anti-Dextranase (Penicillium) are shown to detect under reducing conditions of SDS-PAGE the 41,000 dalton enzyme in cellular extracts. Approximately 10 µg of total protein is loaded per lane. A 1:2,000 dilution of the primary antibody is used followed by detection using HRP Goat-a-Rabbit IgG [H&L] diluted 1:4,000 and color development using 4-CN substrate until sufficient color develops. Other detection systems will yield similar results.