

Datasheet for ABIN987270
anti-HMHA1 antibody (AA 57-71)[Go to Product page](#)

1 Image

Overview

Quantity:	100 µg
Target:	HMHA1
Binding Specificity:	AA 57-71
Reactivity:	Human
Host:	Goat
Clonality:	Polyclonal
Conjugate:	This HMHA1 antibody is un-conjugated
Application:	ELISA, Immunohistochemistry (IHC)

Product Details

Purpose:	HMHA1 (aa57-71)
Immunogen:	Peptide with sequence KATGTLKRPTSLSRH-C, from the N Terminus of the protein sequence according to NP_036424.2.
Sequence:	KATGTLKRPT SLSRH
Isotype:	IgG
Specificity:	To avoid confusion please note that this antibody is designed to recognise the whole protein as coded by NP_036424.2 and won't recognise the peptide found eluted from HLA-A*0201 Molecules by den Haan et al (Science. 1998 Feb 13;279(5353):1054-7, PMID: 946
Cross-Reactivity:	Cow, Human, Mouse, Rat
Purification:	Purified from goat serum by ammonium sulphate precipitation followed by antigen affinity

Product Details

chromatography using the immunizing peptide.

Grade: Verified

Target Details

Target: HMHA1

Alternative Name: HMHA1 ([HMHA1 Products](#))

Background: HMHA1, histocompatibility (minor) HA-1, HA-1, HLA-HA1, KIAA0223, minor histocompatibility antigen HA-1, minor histocompatibility protein HA-1

Gene ID: 23526, 70719, 314618

NCBI Accession: [NP_036424](#)

Application Details

Application Notes: Immunohistochemistry: Paraffin embedded Human Spleen. Recommended concentration: 5 µg/mL.

Western Blot: Preliminary experiments gave an approx 200 kDa band in lysates of cell lines Jurkat and Molt4 after 0.05 µg/mL antibody staining. Please note that currently we cannot find an explanation in the literature for the band we observe given the cal

Peptide ELISA: antibody detection limit dilution 1:128000.

Restrictions: For Research Use only

Handling

Format: Liquid

Concentration: 0.5 mg/mL

Buffer: Supplied at 0.5 mg/mL in Tris saline, 0.02 % sodium azide, pH 7.3 with 0.5 % bovine serum albumin.

Preservative: Sodium azide

Precaution of Use: This product contains Sodium azide: a POISONOUS AND HAZARDOUS SUBSTANCE which should be handled by trained staff only.

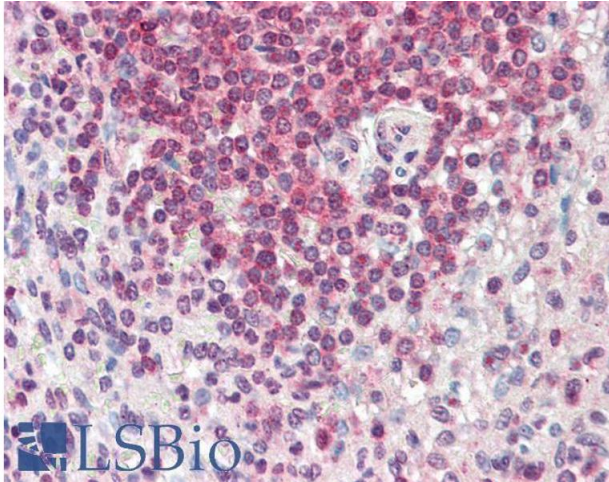
Handling Advice: Minimize freezing and thawing.

Storage: -20 °C

Handling

Storage Comment: Aliquot and store at -20°C, with minimal freeze/thawing. A working aliquot may be refrigerated at 4°C for a few weeks and still remain viable.

Images



Immunohistochemistry

Image 1. ABIN987270 (5µg/ml) staining of paraffin embedded Human Spleen. Steamed antigen retrieval with citrate buffer pH 6, AP-staining.