



[Go to Product page](#)

Datasheet for ABIN987282

## anti-P2RX4 antibody (Internal Region)

### 4 Images

#### Overview

Quantity:	100 µg
Target:	P2RX4
Binding Specificity:	Internal Region
Reactivity:	Human
Host:	Goat
Clonality:	Polyclonal
Conjugate:	This P2RX4 antibody is un-conjugated
Application:	Western Blotting (WB), ELISA, Immunohistochemistry (IHC), Immunofluorescence (IF)

#### Product Details

Purpose:	P2rx4 (mouse)
Immunogen:	Peptide with sequence C-ETDSVSSVTTKAK, from the internal region of the protein sequence according to NP_035156.2.
Sequence:	ETDSVSSVT TKAK
Isotype:	IgG
Cross-Reactivity:	Cow, Dog, Human, Mouse, Pig, Rat
Purification:	Purified from goat serum by ammonium sulphate precipitation followed by antigen affinity chromatography using the immunizing peptide.
Grade:	Verified

## Target Details

---

Target:	P2RX4
Alternative Name:	P2rx4 ( <a href="#">P2RX4 Products</a> )
Background:	P2rx4, purinergic receptor P2X, ligand-gated ion channel, 4, P2X4, AI504491, AW555605, D5Ert444e, ATP receptor, OTTMUSP00000023741, OTTMUSP00000023745, OTTMUSP00000023746, OTTMUSP00000023747, P2X purinoceptor 4, ionotropic purinergic receptor
Gene ID:	5025, 18438, 29659
NCBI Accession:	<a href="#">NP_035156</a>
Pathways:	<a href="#">Synaptic Membrane</a>

## Application Details

---

Application Notes:	Immunohistochemistry: Paraffin embedded Human Uterus. Recommended concentration: 5 µg/mL. Western Blot: Approx 48-50 kDa band observed in lysates of cell line A549 (calculated MW of 43.4 kDa according to Human NP_002551.2). This molecular weight is routinely observed by other sources. Recommended concentration: 0.3-1 µg/mL. Primary incubation 1 Peptide ELISA: antibody detection limit dilution 1:16000.
Comment:	<b>Immunofluorescence:</b> Strong expression of the protein seen in the cytoplasm of A431 cells. Recommended concentration: 10µg/ml.
Restrictions:	For Research Use only

## Handling

---

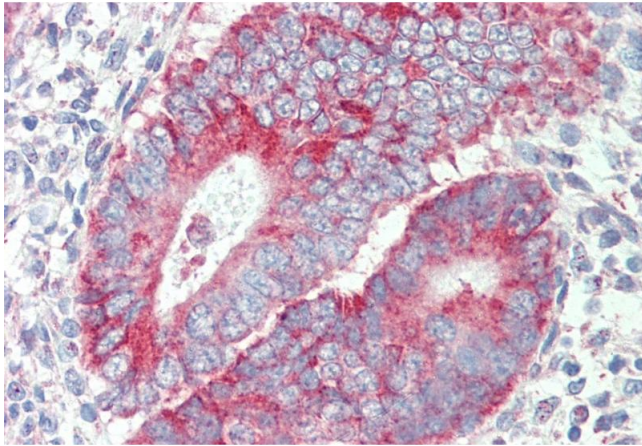
Format:	Liquid
Concentration:	0.5 mg/mL
Buffer:	Supplied at 0.5 mg/mL in Tris saline, 0.02 % sodium azide, pH 7.3 with 0.5 % bovine serum albumin.
Preservative:	Sodium azide
Precaution of Use:	This product contains Sodium azide: a POISONOUS AND HAZARDOUS SUBSTANCE which should be handled by trained staff only.
Handling Advice:	Minimize freezing and thawing.

## Handling

Storage: -20 °C

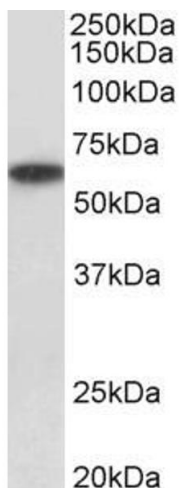
Storage Comment: Aliquot and store at -20°C, with minimal freeze/thawing. A working aliquot may be refrigerated at 4°C for a few weeks and still remain viable.

## Images



### Immunohistochemistry

**Image 1.** ABIN987282 (5 µg/mL) staining of paraffin embedded Human Uterus. Steamed antigen retrieval with citrate buffer pH 6, AP-staining.



### Western Blotting

**Image 2.** Antibody (1 µg/ml) staining of Human Kidney lysate (35 µg protein in RIPA buffer). Primary incubation was 1 hour. Detected by chemiluminescence.



### Western Blotting

**Image 3.** ABIN987282 (0.3 µg/ml) staining of A549 cell lysate (35 µg protein in RIPA buffer). Detected by chemiluminescence.

Please check the [product details page](#) for more images. Overall 4 images are available for ABIN987282.